


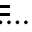
**(ROCKY1.ROCKY) 23334**  
**ROCKY ONE DEPARTURE**

AL-6452 (FAA)

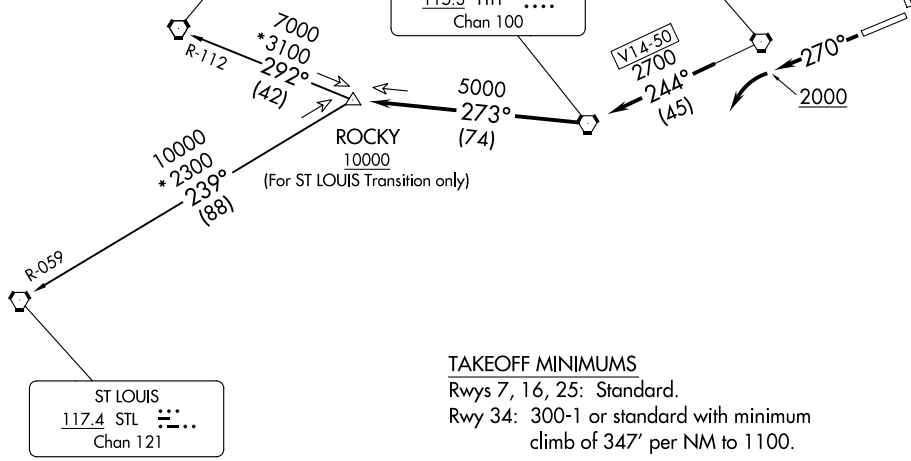
INDIANAPOLIS RGNL (MQJ)  
 INDIANAPOLIS, INDIANA


AWOS-3PT  
 124.175  
 CLNC DEL  
 119.25  
 INDIANAPOLIS DEP CON  
 127.15 317.8

SPINNER  
 112.7 SPI   
 Chan 74

TERRE HAUTE  
 115.3 TTH   
 Chan 100

BRICKYARD  
 116.3 VHP   
 Chan 110

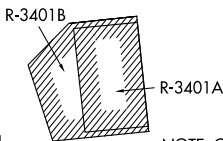


ST LOUIS  
 117.4 STL   
 Chan 121

**TAKEOFF MINIMUMS**

Rwys 7, 16, 25: Standard.  
 Rwy 34: 300-1 or standard with minimum climb of 347' per NM to 1100.

- NOTE: RADAR required.
- NOTE: Select appropriate localizer/DME frequency/channel prior to departure.
- NOTE: Turbojets accelerate to 250K until reaching 10000, if unable advise ATC.
- NOTE: Assigned to aircraft with a requested altitude of 11000 or above.



NOTE: Chart not to scale.

**DEPARTURE ROUTE DESCRIPTION**

**TAKEOFF RWY 25:** Climb heading 270° to 2000 before turning left. Then on assigned heading to assigned altitude. Thence . . . .

**DEPARTING ALL OTHER AUTHORIZED RUNWAYS:** Climb on assigned heading to assigned altitude. Thence . . . .

. . . . expect RADAR vectors to join VHP R-244 to TTH VORTAC, then via TTH R-273 to ROCKY INT then via transition or assigned route. Expect clearance to requested altitude ten minutes after departure.

**SPINNER TRANSITION (ROCKY1.SPI):** From over ROCKY INT on SPI R-112 to SPI VORTAC.  
**ST LOUIS TRANSITION (ROCKY1.STL):** From over ROCKY INT on STL R-059 to STL VORTAC.

**ROCKY ONE DEPARTURE**  
**(ROCKY1.ROCKY) 01FEB18**

INDIANAPOLIS, INDIANA  
 INDIANAPOLIS RGNL (MQJ)

EC-2, 11 JUN 2026 to 09 JUL 2026

EC-2, 11 JUN 2026 to 09 JUL 2026