

BORRN SIX DEPARTURE (RNAV)

9200 TUF 60 of 2026 UNTU 11 '9-CC

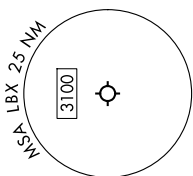
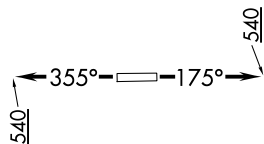
ASOS
119.925
CTAF
123.0
CINC DEL
125.2
HOUSTON DEP CON
134.45 284.0

TAKEOFF MINIMUMS

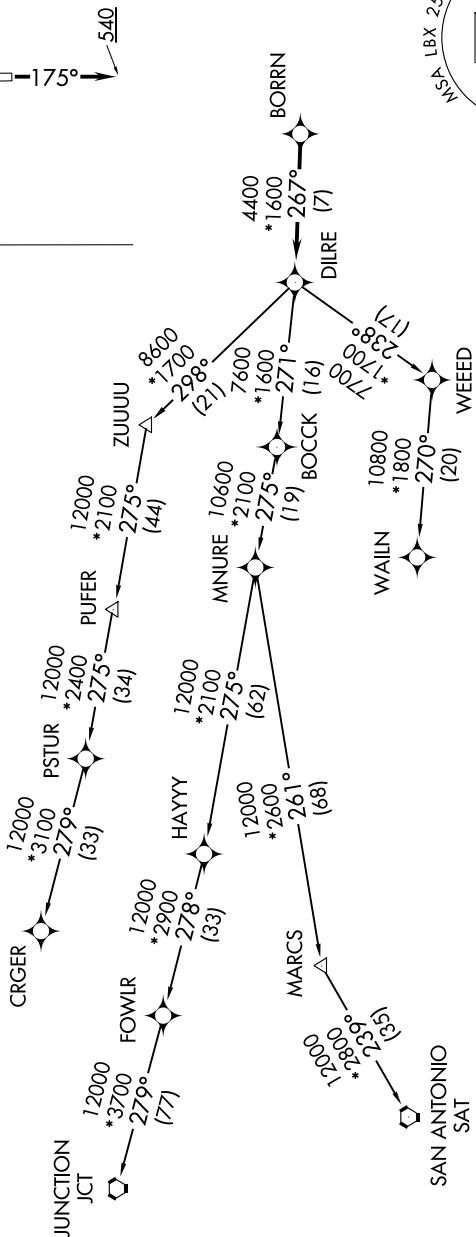
Rwys 17, 35: Standard with minimum
climb of 500'/NM to 540.

RNAV 1 - DME/DME/IRU or GPS.
RADAR required.

**TOP ALTITUDE:
ASSIGNED BY ATC**



NOTE: Chart not to scale.



NOTE: CRGR-TRANSITION ATC assigned only
for aircraft departing 54T, AXH, EFD, GLS,
HPY, IWS, LBX, LVJ, SGR, TME, T00, T41.

(CONTINUED ON FOLLOWING PAGE)

BORRN SIX DEPARTURE (RNAV)