

(LFK4.LFK) 25331

AL-6453 (FAA)

TEXAS GULF COAST RGNL (LBX)
ANGLETON/LAKE JACKSON, TEXAS

LUFKIN FOUR DEPARTURE

HOUSTON DEP CON
134.45 284.0
ASOS
119.925
CLNC DEL
125.2
CTAF
123.0

**TOP ALTITUDE:
ASSIGNED BY ATC**

LITTLE ROCK
115.1 LIT ::::
Chan 98

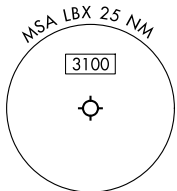
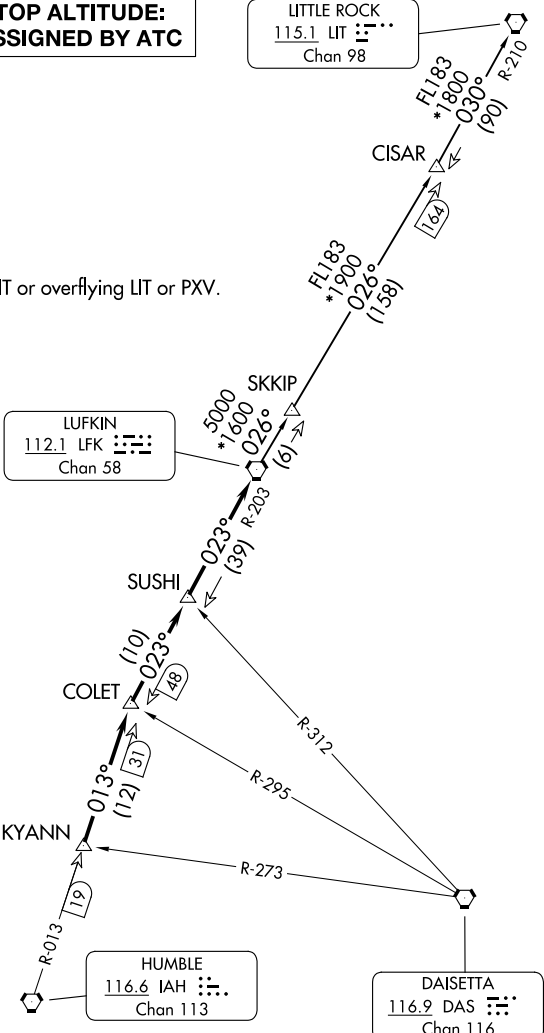
RADAR and DME required.

NOTE: For aircraft destined LIT or overflying LIT or PXV.

LUFKIN
112.1 LFK ::::
Chan 58

HUMBLE
116.6 IAH ::::
Chan 113

DAISETTA
116.9 DAS ::::
Chan 116



TAKEOFF MINIMUMS
Rwys 17, 35: Standard.

NOTE: Chart not to scale.

(CONTINUED ON FOLLOWING PAGE)

SC-5, 11 JUN 2026 to 09 JUL 2026

SC-5, 11 JUN 2026 to 09 JUL 2026

LUFKIN FOUR DEPARTURE
(LFK4.LFK) 27NOV25

ANGLETON/LAKE JACKSON, TEXAS
TEXAS GULF COAST RGNL (LBX)