

WAAS CH <b>61119</b> <b>W35A</b>	APP CRS <b>354°</b>	Rwy Idg TDZE Apt Elev	<b>3501</b> <b>1026</b> <b>1030</b>
----------------------------------------	------------------------	-----------------------------	-------------------------------------------

# RNAV (GPS) RWY 35

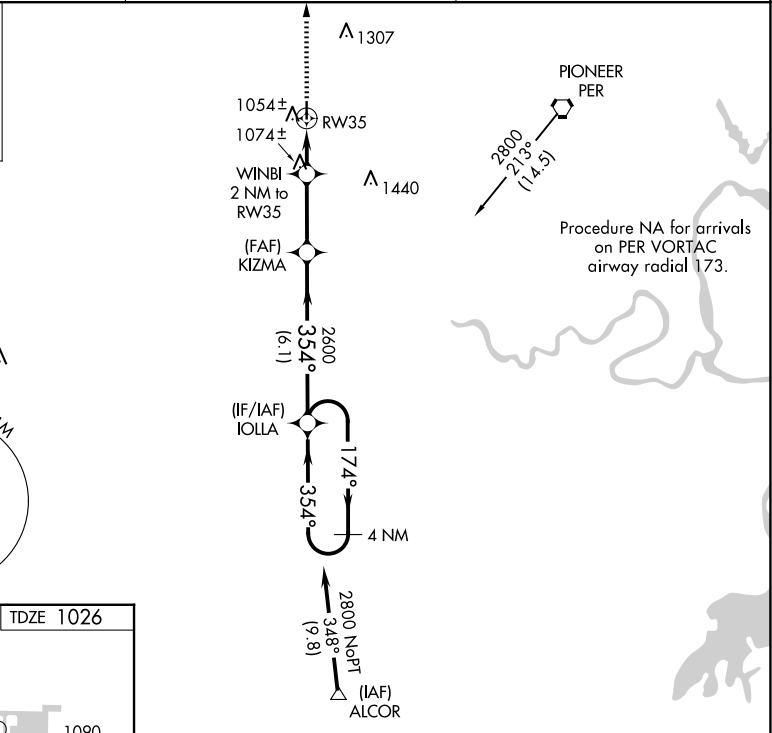
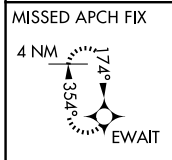
BLACKWELL-TONKAWA MUNI (BKN)

RNP APCH.

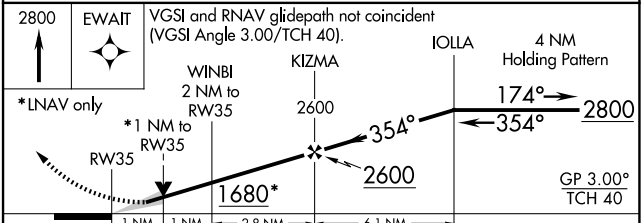
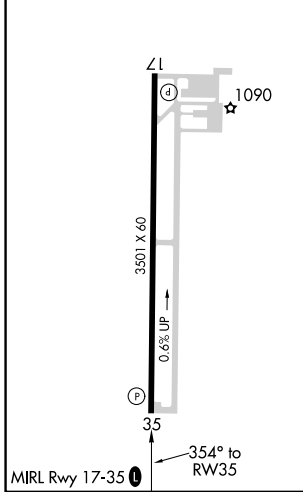
▼ For uncompensated Baro-VNAV systems, LNAV/VNAV NA below -17°C or above 54°C. When local altimeter setting not received, use Ponca City altimeter setting and increase all DA 31 feet and all MDA 40 feet and LNAV/VNAV all Cts visibility ¼ mile. Baro-VNAV and VDP NA when using Ponca City altimeter setting.

MISSED APPROACH: Climb to 2800 direct EWAIT and hold.

AWOS-3PT <b>120.575</b>	KANSAS CITY CENTER <b>127.8 319.1</b>	UNICOM <b>122.8 (CTAF) 0</b>
----------------------------	------------------------------------------	---------------------------------



ELEV 1030	TDZE 1026
-----------	-----------



CATEGORY	A	B	C	D
LPV DA	1276-1	250 (300-1)		NA
LNAV/VNAV DA	1324-1	298 (300-1)		NA
LNAV MDA	1340-1	314 (400-1)		NA

SC-1, 11 JUN 2026 to 09 JUL 2026

SC-1, 11 JUN 2026 to 09 JUL 2026