

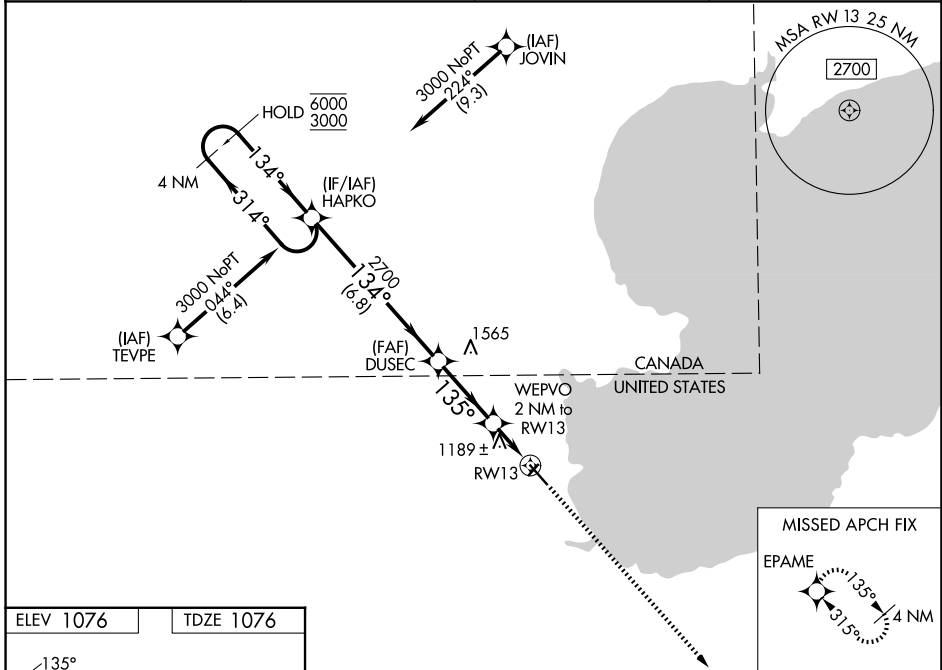
WAAS CH <b>69437</b> <b>W13A</b>	APP CRS <b>135°</b>	Rwy Ldg TDZE Apt Elev	<b>5400</b> <b>1076</b> <b>1076</b>
--	------------------------	-----------------------------	---

# RNAV (GPS) RWY 13

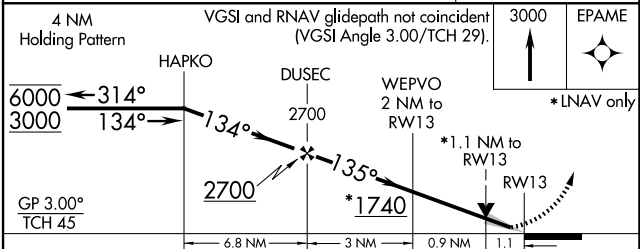
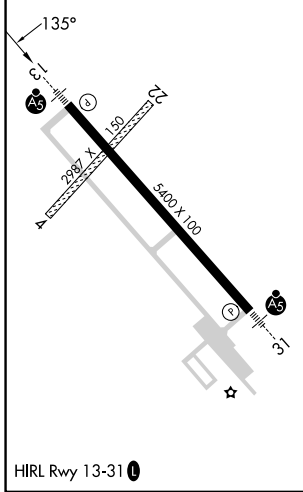
WARROAD INTL MEML (R.R.T)

RNP APCH.		MALSR	MISSED APPROACH: Climb to 3000 direct EPAME and hold.
Circling NA to Rwy's 4 and 22. Inop table does not apply. For uncompensated Baro-VNAV systems, LNAV/VNAV NA below -21°C or above 54°C.			

AWOS-3 <b>119.925</b>	MINNEAPOLIS CENTER <b>134.75 251.1</b>	GCO <b>121.725</b>	UNICOM <b>123.05</b> (CTAF)
--------------------------	---	-----------------------	--------------------------------



ELEV 1076	TDZE 1076
-----------	-----------



CATEGORY	A	B	C	D
LPV DA		1276- <sup>3</sup> / <sub>4</sub>	200 (200- <sup>3</sup> / <sub>4</sub> )	
LNAV/VNAV DA		1365-1	289 (300-1)	
LNAV MDA		1440-1	364 (400-1)	
CIRCLING	1500-1 424 (500-1)	1540-1 464 (500-1)	1960-2 <sup>3</sup> / <sub>4</sub> 884 (900-2 <sup>3</sup> / <sub>4</sub> )	1960-3 884 (900-3)

NC-1, 11 JUN 2026 to 09 JUL 2026

NC-1, 11 JUN 2026 to 09 JUL 2026