

|                                 |                        |   |
|---------------------------------|------------------------|---|
| WAAS<br>CH <b>73022</b><br>W32A | APP CRS<br><b>327°</b> | Rwy Idg <b>4600</b><br>TDZE <b>1145</b><br>Apt Elev <b>1145</b> |
|---------------------------------|------------------------|---|

# RNAV (GPS) RWY 32

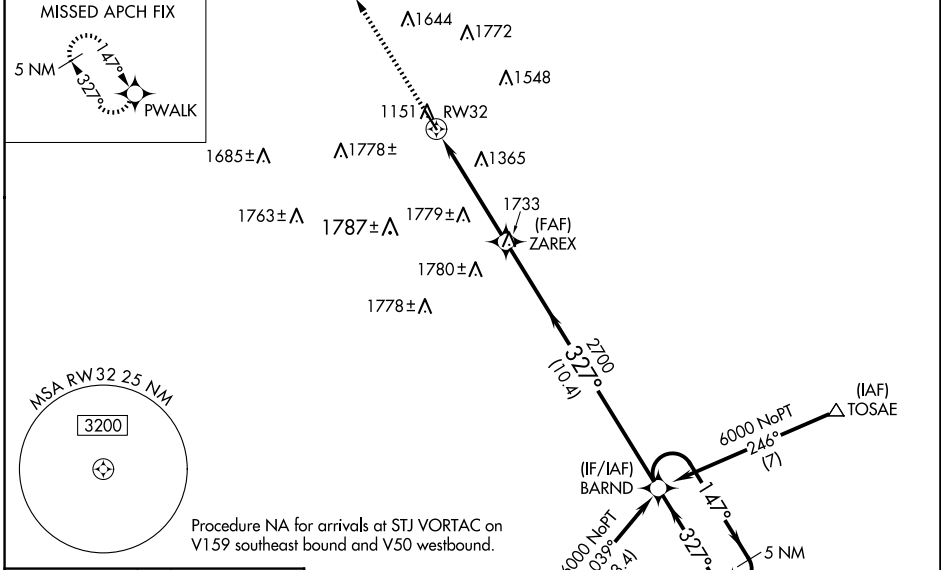
NORTHWEST MISSOURI RGNL (EVU)

RNP APCH - GPS.

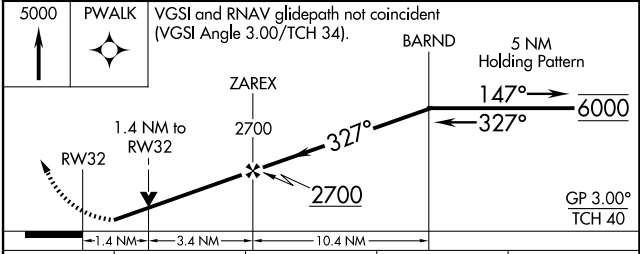
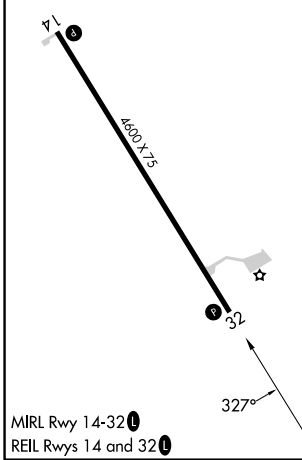
**NA** Circling NA east of Rwy 14-32. For uncompensated Baro-VNAV systems, LNAV/VNAV NA below -17°C or above 54°C. Rwy 32 helicopter visibility reduction below ¾ SM NA. When local altimeter setting not received, use St. Joseph altimeter setting; increase LPV DA to 1520 feet, LNAV/VNAV DA to 1653 feet and LNAV/VNAV visibility all Cats ¼ SM; increase all MDAs 140 feet and LNAV visibility Cat C ⅓ SM. Baro-VNAV and VDP NA when using St. Joseph altimeter setting.

**MISSED APPROACH:** Climb to 5000 direct PWALK and hold, continue climb-in-hold to 5000.

|                            |  |                                 |
|----------------------------|--|---------------------------------|
| AWOS-3PT<br><b>118.225</b> | MINNEAPOLIS CENTER<br><b>119.6 290.4</b> | UNICOM<br><b>122.8 (CTAF) ①</b> |
|----------------------------|--|---------------------------------|



|           |           |
|-----------|-----------|
| ELEV 1145 | TDZE 1145 |
|-----------|-----------|



| CATEGORY     | A                    | B           | C                    | D  |
|--------------|----------------------|-------------|----------------------|----|
| LPV DA       | 1395-1 250 (300-1)   |             |                      | NA |
| LNAV/VNAV DA | 1528-1½ 383 (400-1½) |             |                      | NA |
| LNAV MDA     | 1620-1               | 475 (500-1) | 1620-1¾ 475 (500-1¾) | NA |
| CIRCLING     | 1620-1               | 475 (500-1) | 2120-3 975 (1000-3)  | NA |

NC-3, 11 JUN 2026 to 09 JUL 2026

NC-3, 11 JUN 2026 to 09 JUL 2026