

WAAS CH 50139 W34A	APP CRS 337°	Rwy Ldg TDZE Apt Elev	5001 769 774
--	------------------------	-----------------------------	---

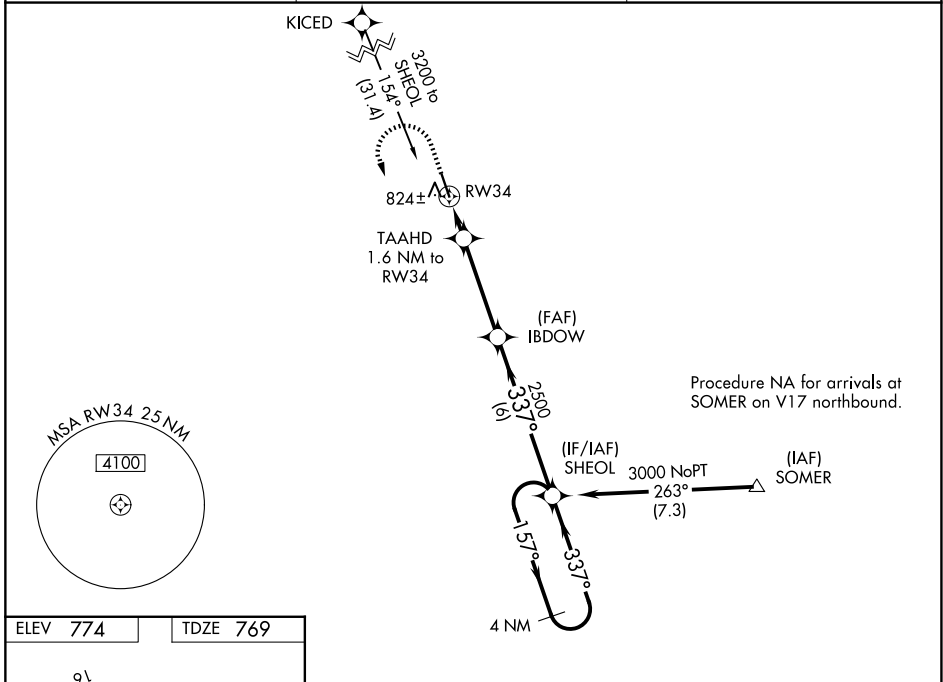
RNAV (GPS) RWY 34

CASTROVILLE MUNI (CVB)

For uncompensated Baro-VNAV systems, LNAV/VNAV NA below -15°C (5°F) or above 54°C (130°F). DME/DME RNP-0.3 NA. When local altimeter setting not received, use Lackland AFB (Kelly Fld Annex) altimeter setting: increase all DA/MDA 60 feet and all visibilities ¼ mile. Helicopter visibility reduction below ¾ SM NA. Night landing: Rwy 16 NA.

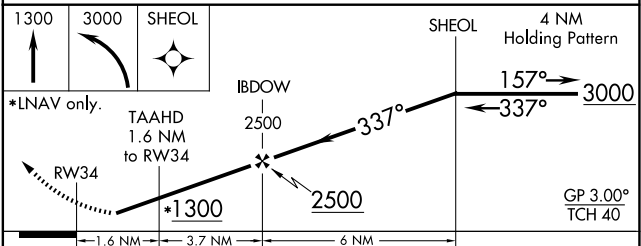
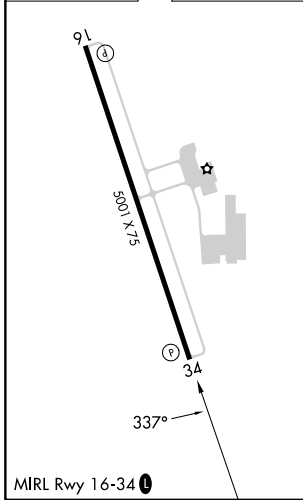
MISSED APPROACH: Climb to 1300 then climbing left turn to 3000 direct SHEOL and hold.

AWOS-3 119.25	SAN ANTONIO APP CON 118.05 353.5	UNICOM 122.8 (CTAF) 0
-------------------------	--	---------------------------------



Procedure NA for arrivals at SOMER on V17 northbound.

ELEV 774	TDZE 769
----------	----------



CATEGORY	A	B	C	D
LPV DA	1019-7/8	250 (300-7/8)		NA
LNAV/VNAV DA	1127-1 1/4	358 (400-1 1/4)		NA
LNAV MDA	1200-1	431 (500-1)	1200-1 1/8 431 (500-1 1/8)	NA
CIRCLING	1200-1 426 (500-1)	1380-1 606 (700-1)	1580-2 1/4 806 (900-2 1/4)	NA