

VOR/DME AHN 116.95 Chan 116(Y)	APP CRS 070°	Rwy Ldg TDZE Apt Elev 5004 615 615
--	------------------------	--

VOR RWY 11

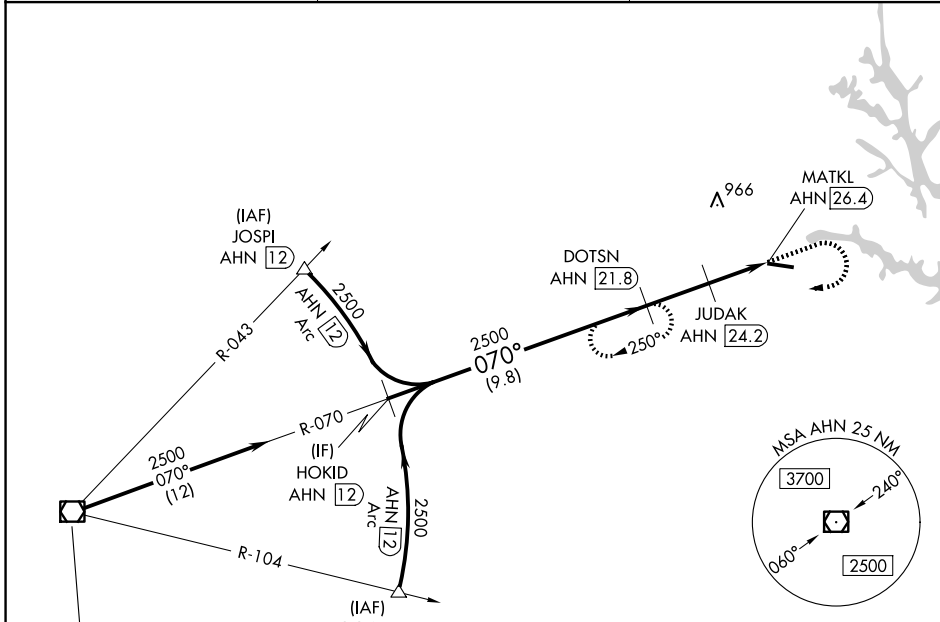
ELBERT COUNTY-PATZ FLD (EBA)

DME required.

▼ Procedure NA at night. Rwy 11 helicopter visibility reduction below 1 SM NA.

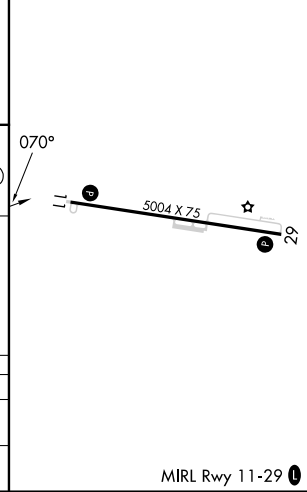
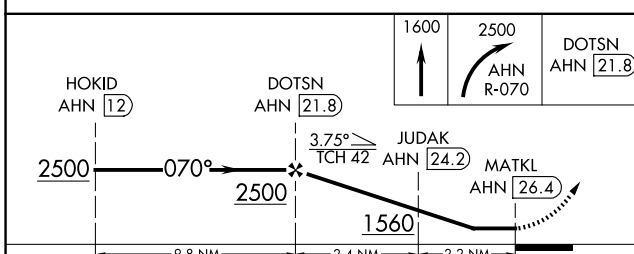
▲ MISSED APPROACH: Climb to 1600 then climbing right turn to 2500 on AHN VOR/DME R-070 to DOTSN/AHN 21.8 DME and hold.

AWOS-3 118.15	ATLANTA CENTER 127.5 316.05	UNICOM 122.8 (CTAF) 📻
-------------------------	---------------------------------------	--



IAF
ATHENS
116.95 AHN
Chan 116(Y)

ELEV 615	TDZE 615
----------	----------



CATEGORY	A	B	C	D
S-11	1200-1	585 (600-1)	1200-1 ³ / ₄ 585 (600-1 ³ / ₄)	NA
CIRCLING	1200-1 585 (600-1)	1200-1 ¹ / ₄ 585 (600-1 ¹ / ₄)	1280-2 665 (700-2)	NA

MIRL Rwy 11-29 **📻**

SE-4, 11 JUN 2026 to 09 JUL 2026

SE-4, 11 JUN 2026 to 09 JUL 2026