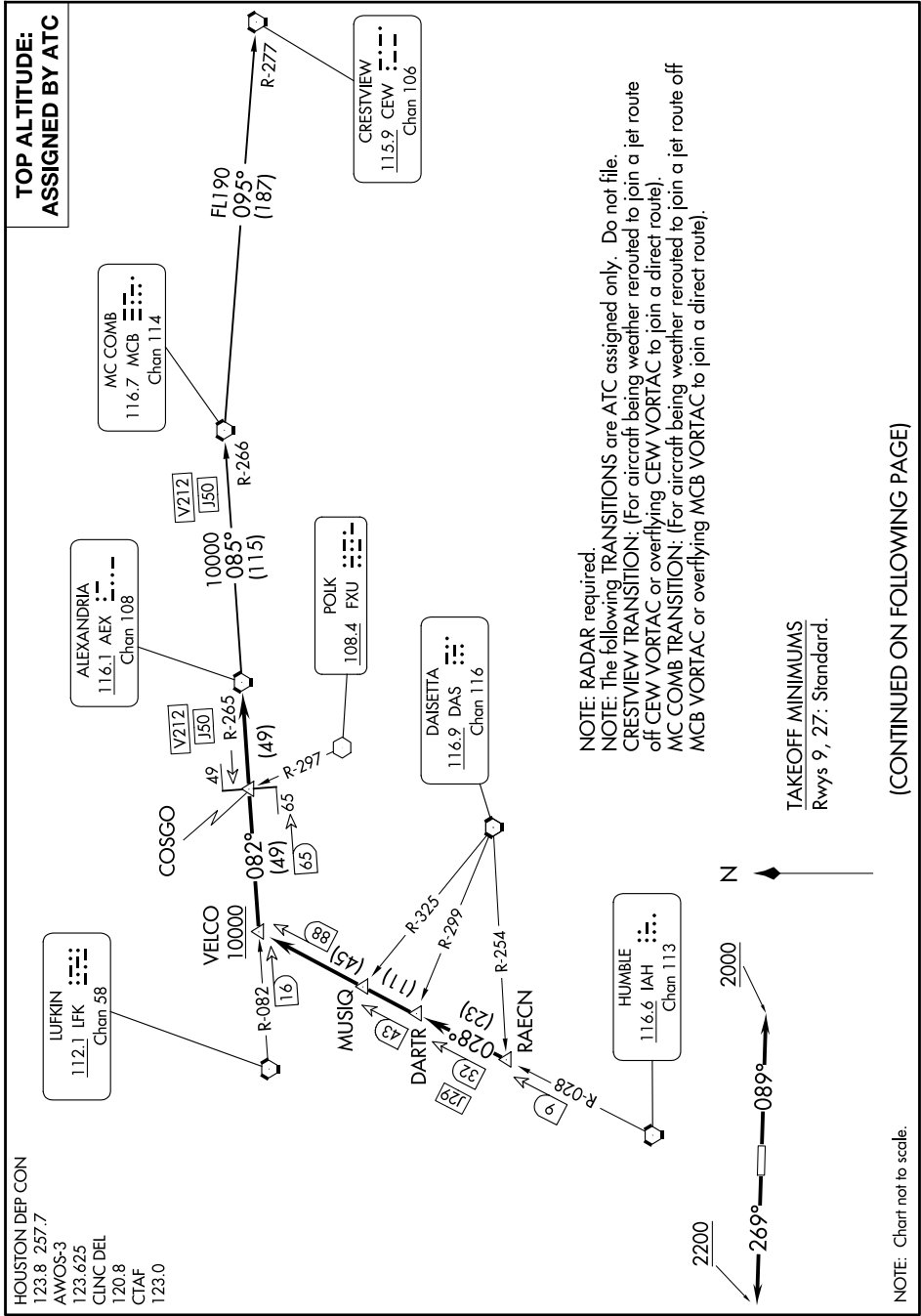


# ALEXANDRIA THREE DEPARTURE

SC-5, 11 JUN 2026 to 09 JUL 2026



HOUSTON DEP CON  
 123.8 257.7  
 AWOS-3  
 123.625  
 CLNC DEL  
 120.8  
 CTAF  
 123.0

# ALEXANDRIA THREE DEPARTURE

NOTE: RADAR required.  
 NOTE: The following TRANSITIONS are ATC assigned only. Do not file.  
 CRESTVIEW TRANSITION: (For aircraft being weather routed to join a jet route off CEW VORTAC or overlying CEW VORTAC to join a direct route).  
 MC COMB TRANSITION: (For aircraft being weather routed to join a jet route off MCB VORTAC or overlying MCB VORTAC to join a direct route).

TAKEOFF MINIMUMS  
 Rwys 9, 27: Standard.

(CONTINUED ON FOLLOWING PAGE)

NOTE: Chart not to scale.

SC-5, 11 JUN 2026 to 09 JUL 2026