

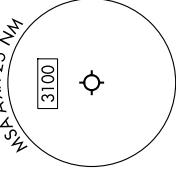
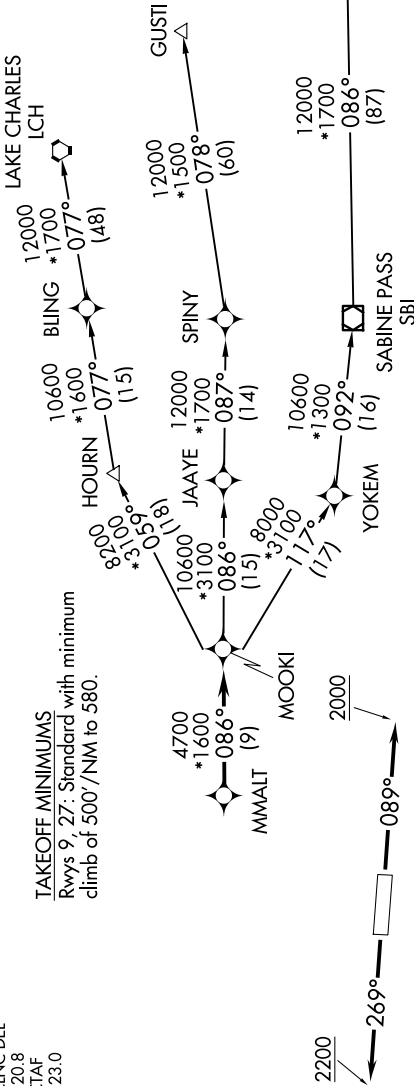
# MMALT SEVEN DEPARTURE (RNAV)

9200 N01 60 01 2020 N01 11 '9-CS

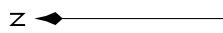
HOUSTON DEP CON  
 123.8 257.7  
 AWOS-3  
 123.625  
 CLNC DEL  
 120.8  
 CTAF  
 123.0

RNAV 1 - DME/DME/IRU or GPS.  
 RADAR required.

**TAKEOFF MINIMUMS**  
 Rwy 9, 27: Standard with minimum  
 climb of 500'/NM to 580.



**TOP ALTITUDE:  
 ASSIGNED BY ATC**



NOTE: Chart not to scale.

NOTE: GUSTI and LCH Transitions ATC assigned only for aircraft departing AXH, EFD, GLS, HPY, IWS, LBX, LVJ, SGR, TME, T00, T41 and 54T.

**DEPARTURE ROUTE DESCRIPTION**

**TAKEOFF RUNWAY 9:** Climb on heading 089° to 2000, for RADAR vectors to MMALT, thence. . . .  
**TAKEOFF RUNWAY 27:** Climb on heading 269° to 2200, for RADAR vectors to MMALT, thence. . . .  
 . . . on track 086° to MOOKI, then on (transition). Maintain ATC assigned altitude.  
 Expect filed altitude 10 minutes after departure.

- GUSTI TRANSITION (MMALT7.GUSTI)
- LAKE CHARLES TRANSITION (MMALT7.LCH)
- WHITE LAKE TRANSITION (MMALT7.LLA)