

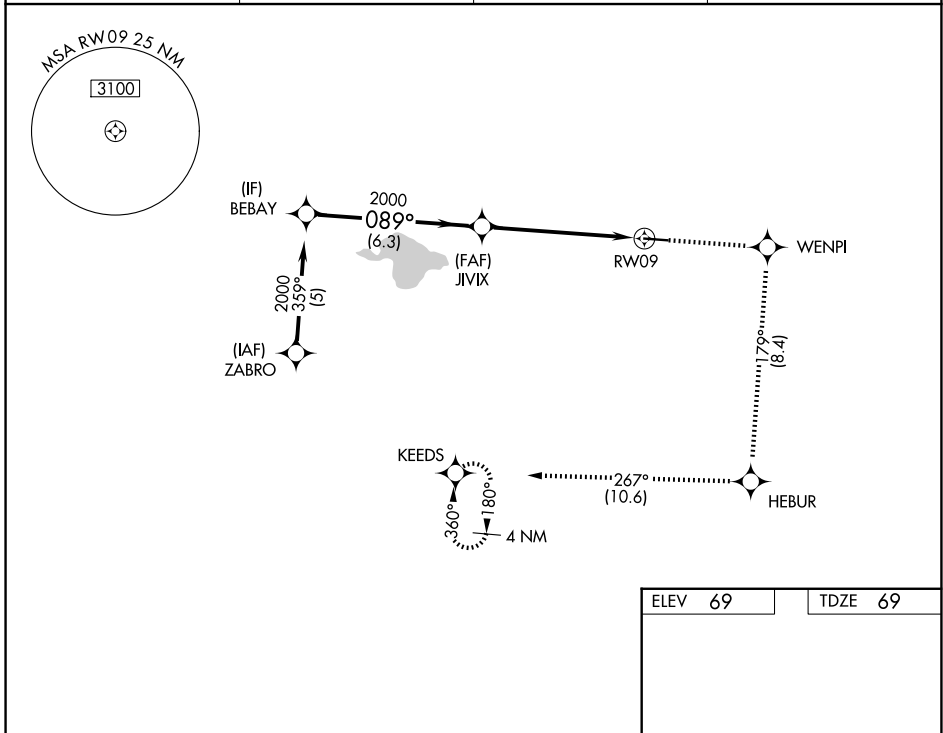
APP CRS	Rwy Ldg	<b>5002</b>
<b>089°</b>	TDZE	<b>69</b>
	Apt Elev	<b>69</b>

# RNAV (GPS) RWY 9

HOUSTON/SOUTHWEST (A.X.H)

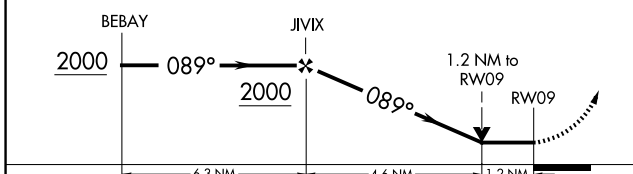
RNP APCH.	MISSED APPROACH: Climb to 2700 direct WENPI and on track 179° to HEBUR and on track 267° to KEEDS and hold.
⚠ Circling Rwy 27 NA at night. Rwy 9 helicopter visibility reduction below ¾ SM NA.	

AWOS-3 <b>123,625</b>	HOUSTON APP CON <b>123.8 257.7</b>	CLNC DEL <b>120.8</b>	UNICOM <b>123.0 (CTAF) 0</b>
--------------------------	---------------------------------------	--------------------------	---------------------------------



ELEV 69	TDZE 69
---------	---------

VGSI and descent angles not coincident (VGSI Angle 3.50/TCH 50).	2700	WENPI	tr 179°	HEBUR	tr 267°	KEEDS
--	------	-------	---------	-------	---------	-------



CATEGORY	A	B	C	D
RNAV MDA	580-1	511 (600-1)	580-1½ 511 (600-1½)	NA
CIRCLING	620-1	551 (600-1)	700-1¾ 631 (700-1¾)	NA

REIL Rwys 9 and 27 0  
MIRL Rwy 9-27 0

SC-5, 11 JUN 2026 to 09 JUL 2026

SC-5, 11 JUN 2026 to 09 JUL 2026