

STRYA EIGHT DEPARTURE (RNAV)

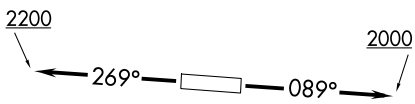
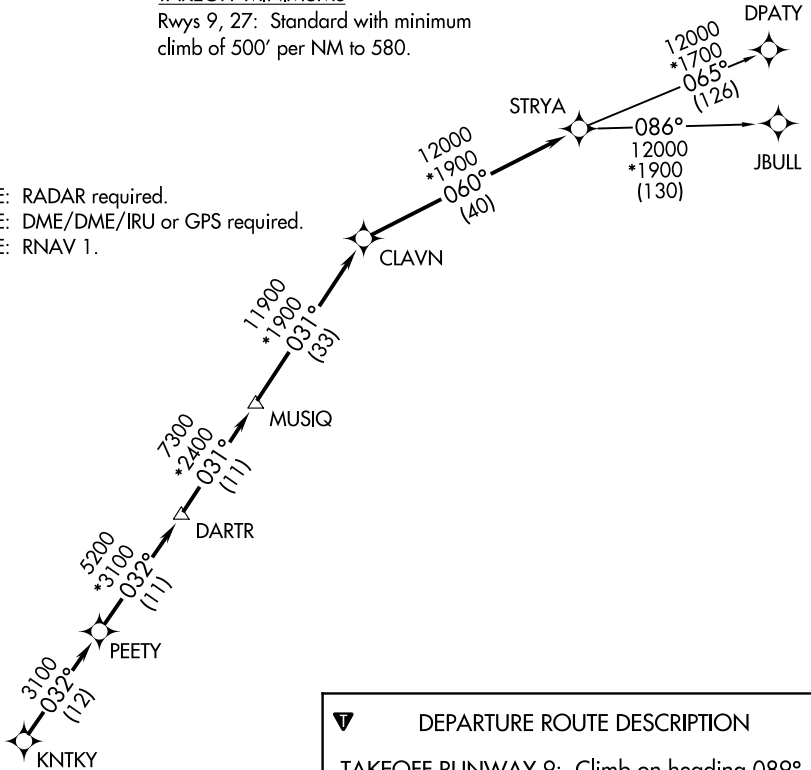
TOP ALTITUDE: ASSIGNED BY ATC

AWOS-3
123.625
CTAF
123.0
CLNC DEL
120.8
HOUSTON DEP CON
123.8 257.7

TAKEOFF MINIMUMS

Rwys 9, 27: Standard with minimum climb of 500' per NM to 580.

NOTE: RADAR required.
NOTE: DME/DME/IRU or GPS required.
NOTE: RNAV 1.



NOTE: Chart not to scale.

DEPARTURE ROUTE DESCRIPTION

TAKEOFF RUNWAY 9: Climb on heading 089° to 2000 for RADAR vectors to KNTKY, thence. . . .

TAKEOFF RUNWAY 27: Climb on heading 269° to 2200 for RADAR vectors to KNTKY, thence. . . .

. . . .on track 032° to PEETY, then on track 032° to DARTR, then on track 031° to MUSIQ, then on track 031° to CLAVN, then on track 060° to STRYA, then on (transition). Maintain ATC assigned altitude. Expect filed altitude 10 minutes after departure.

DPATY TRANSITION (STRYA8.DPATY)
JBULL TRANSITION (STRYA8.JBULL)

SC-5, 11 JUN 2026 to 09 JUL 2026

SC-5, 11 JUN 2026 to 09 JUL 2026