

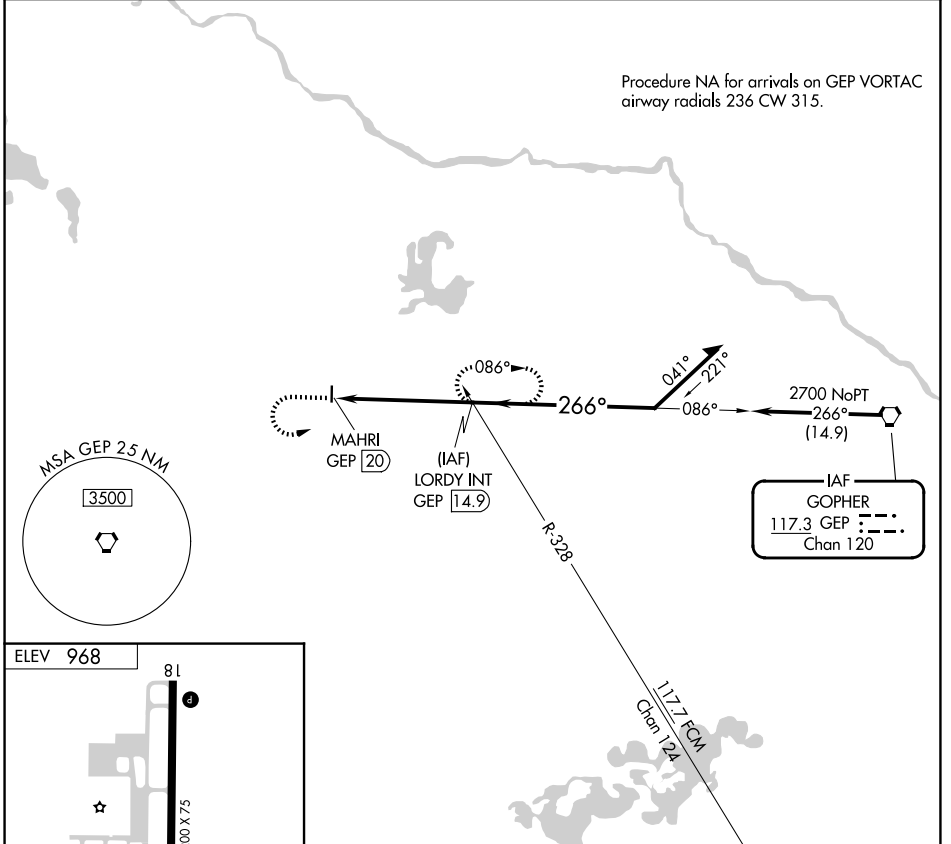
VORTAC GEP 117.3 Chan 120	APP CRS 266°	Rwy Ldg TDZE Apt Elev	N/A N/A 968
---	------------------------	-----------------------------	--

VOR-A
BUFFALO MUNI (CFE)

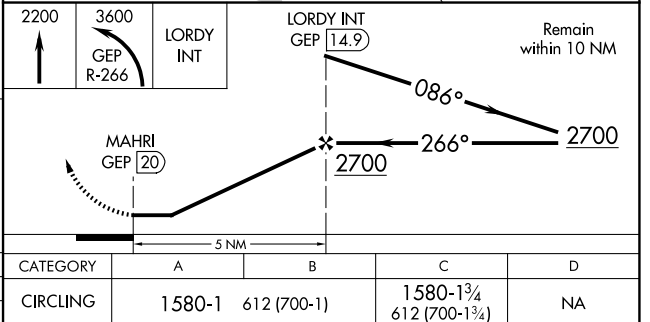
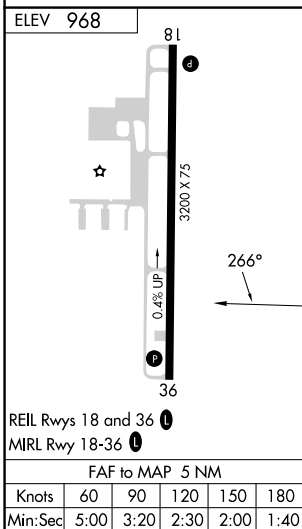
⚠ When local altimeter setting not received, use Maple Lake altimeter setting. When VGSI inoperative, procedure NA at night.

MISSED APPROACH: Climb to 2200 then climbing left turn to 3600 via GEP VORTAC R-266 to LORDY INT/GEP VORTAC 14.9 DME and hold.

AWOS-3PT 120.45	MINNEAPOLIS APP CON 126.5 335.65	GCO 121.725	UNICOM 122.8 (CTAF) 0
---------------------------	--	-----------------------	--



Procedure NA for arrivals on GEP VORTAC airway radials 236 CW 315.



NC-1, 11 JUN 2026 to 09 JUL 2026

NC-1, 11 JUN 2026 to 09 JUL 2026