

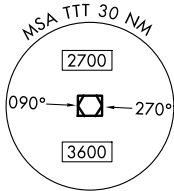
# JOE POOL EIGHT DEPARTURE

LONE STAR DEP CON  
124.3 282.275  
CLNC DEL (When twr closed)  
121.35  
GND CON  
121.875  
MC KINNEY TOWER ★  
118.825 (CTAF)

RADAR and DME required.

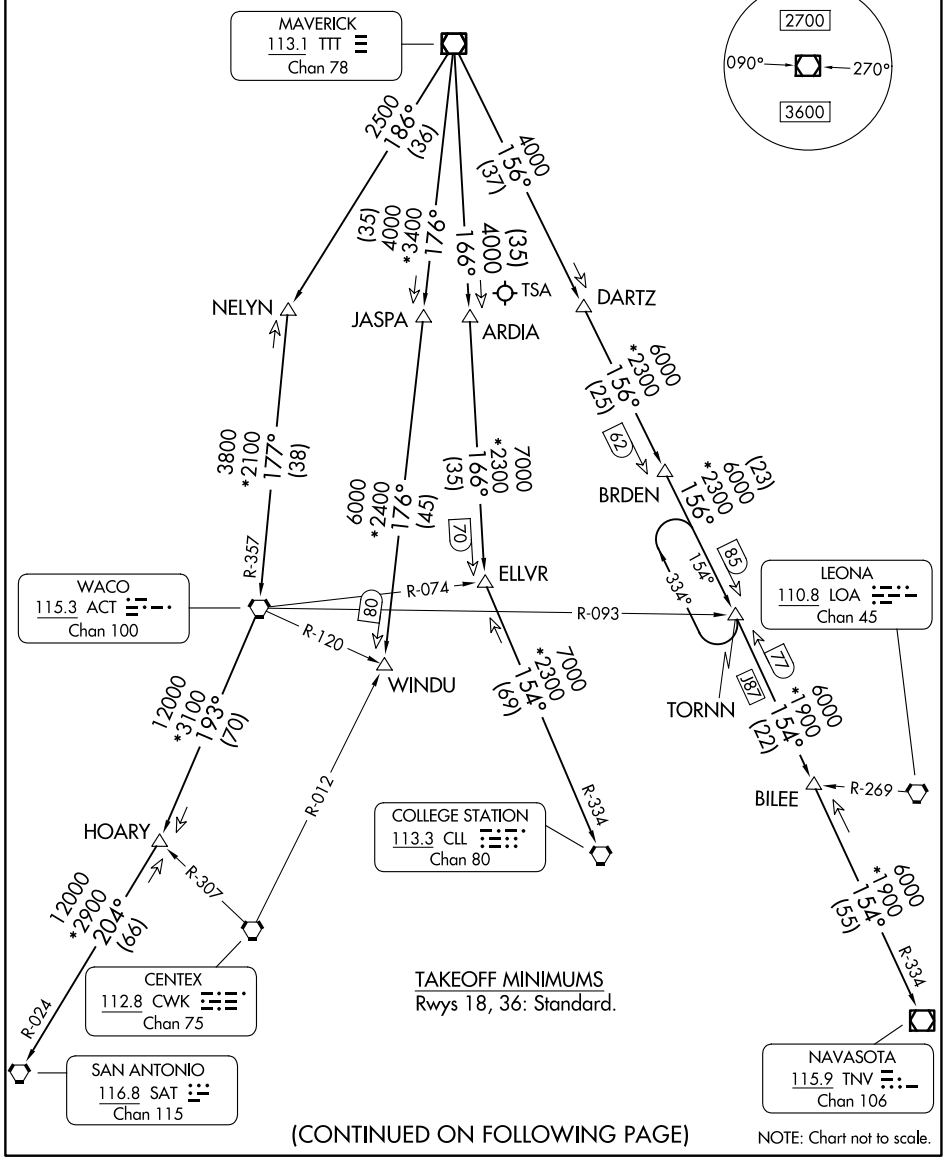
**TOP ALTITUDE:  
ASSIGNED BY ATC**

MAVERICK  
113.1 TTT  
Chan 78



SC-2, 11 JUN 2026 to 09 JUL 2026

SC-2, 11 JUN 2026 to 09 JUL 2026



TAKEOFF MINIMUMS  
Rwys 18, 36: Standard.

(CONTINUED ON FOLLOWING PAGE)

NOTE: Chart not to scale.

# JOE POOL EIGHT DEPARTURE