

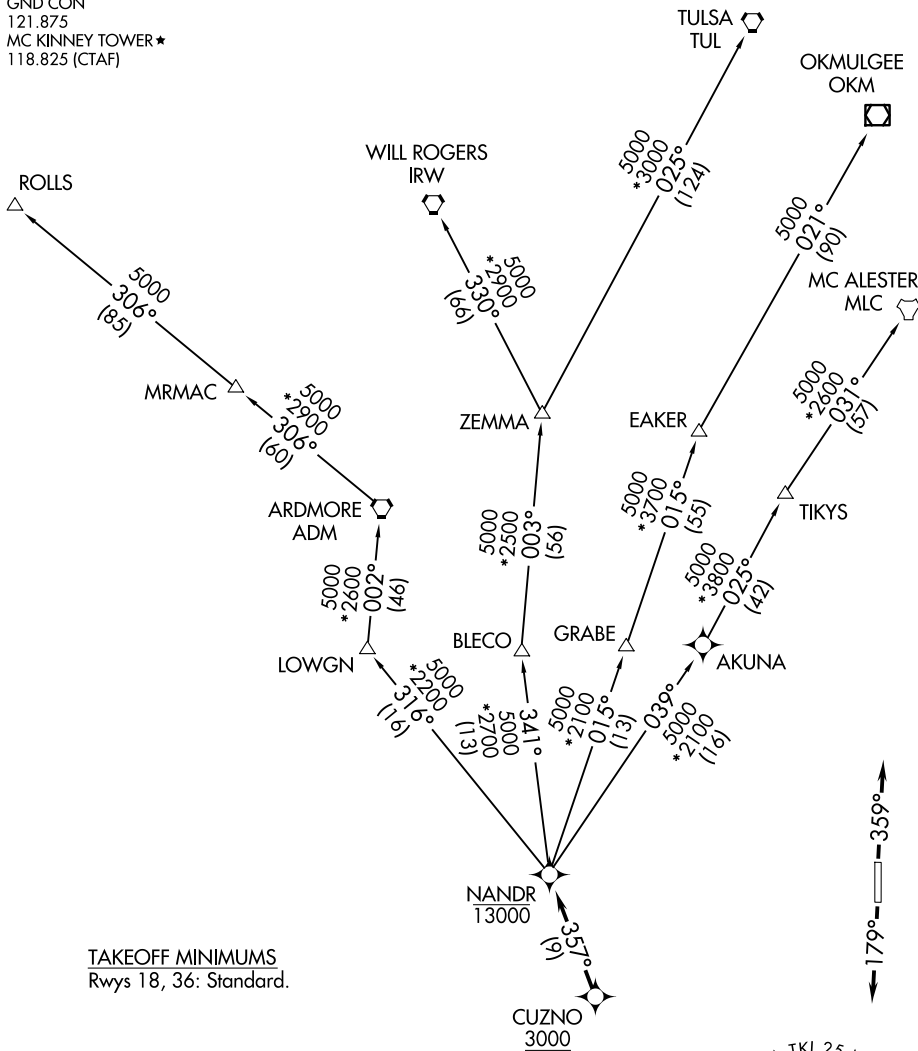
NANDR FOUR DEPARTURE (RNAV)

LONE STAR DEP CON
 124.3 282.275
 CLNC DEL (When twr closed)
 121.35
 GND CON
 121.875
 MC KINNEY TOWER ★
 118.825 (CTAF)

RNAV 1 - DME/DME/IRU or GPS required.

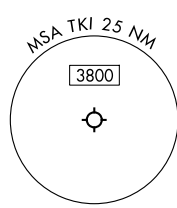
RADAR required.

**TOP ALTITUDE:
 ASSIGNED BY ATC**



TAKEOFF MINIMUMS
 Rwys 18, 36: Standard.

NOTE: EAKER Transition: For TUL terminal arrivals only.
 NOTE: TULSA Transition: For all aircraft overflying TUL VORTAC.
 NOTE: Aircraft arriving to the Oklahoma City terminal area, file and expect the ZEMMA enroute transition.



NOTE: Chart not to scale.

(CONTINUED ON FOLLOWING PAGE)

NANDR FOUR DEPARTURE (RNAV)

SC-2, 11 JUN 2026 to 09 JUL 2026

SC-2, 11 JUN 2026 to 09 JUL 2026