

VORTAC BYP 114.6 Chan 93	APP CRS 214°	Rwy Ldg TDZE Apt Elev N/A N/A 589
--	------------------------	---

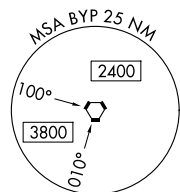
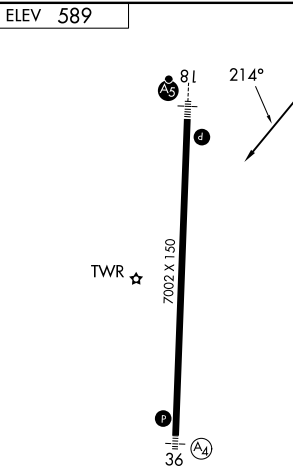
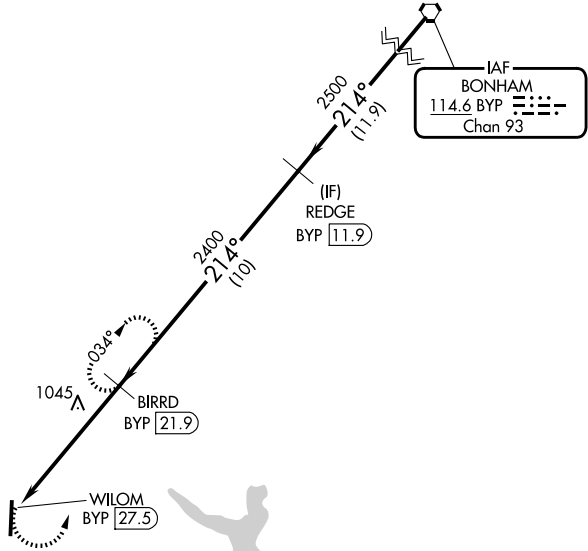
VOR/DME-A
MCKINNEY NTL (TKI)

When local altimeter setting not received use Dallas Love Fld altimeter setting and increase all MDA 80 feet and Cats C and D visibility 1/4 mile.

MISSED APPROACH: Climbing left turn to 2400 on BYP VORTAC R-214 to BIRRD/BYP 21.9 DME and hold.

ATIS 119.925	LONE STAR APP CON 124.3 282.275	MC KINNEY TOWER ★ 118.825 (CTAF) 0	GND CON 121.875	CLNC DEL 121.35 (When twr closed)	UNICOM 122.95
------------------------	---	---	---------------------------	--	-------------------------

Procedure NA for arrivals on BYP VORTAC airway radials 173 CW 264.



	2400 BIRRD BYP 21.9 BYP R-214	2400 BIRRD BYP 21.9	2500 REDGE BYP 11.9	2500 BYP VORTAC
	5.6 NM	10 NM	11.9 NM	
CATEGORY	A	B	C	D
CIRCLING	1360-1 771 (800-1)	1360-1¼ 771 (800-1¼)	1360-2¼ 771 (800-2¼)	1380-2½ 791 (800-2½)

SC-2, 11 JUN 2026 to 09 JUL 2026

SC-2, 11 JUN 2026 to 09 JUL 2026