

SW-4, 11 JUN 2026 to 09 JUL 2026

**TOP ALTITUDE:
ASSIGNED BY ATC**

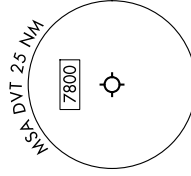
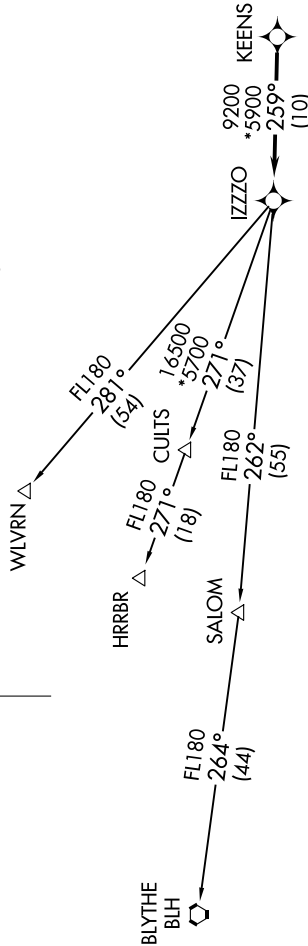
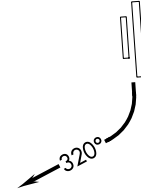
PHOENIX DEP CON
120.7 239.0
ATIS
126.5
CLINC DEL
123.9
GND CON
121.8
DEER VALLEY TOWER*
118.4 (Rwy 7R-25)
120.2 (Rwy 7L-25R)

RNAV 1 - GPS.
RADAR required.

- NOTE: Turbojets and turboprops only.
- NOTE: Aircraft requesting FL220 and below must file BLYTHE Transition.
- NOTE: Turbojets landing LAX, file WLVRN Transition.
- NOTE: Turbojets landing other than LAX and turboprops landing at LAX: Requesting FL240 and above, file HRRBR Transition.
- NOTE: Aircraft departing KGEU and KGYR ATC assigned only.

TAKEOFF MINIMUMS

Rwys 7L/R: NA - Obstacles.
Rwys 25L/R: Standard with minimum climb of 370'/NM to 4600.



DEPARTURE ROUTE DESCRIPTION

TAKEOFF RUNWAYS 25L/R: Climbing right turn heading 320° or as assigned by ATC, hence. . . .
for RADAR vectors to KEENS, then on track 259° to IZZO, then on (transition).
Maintain ATC assigned altitude, expect filed altitude 3 minutes after departure.

- BLYTHE TRANSITION (IZZO8.BLH)
- HRRBR TRANSITION (IZZO8.HRRBR)
- WLVRN TRANSITION (IZZO8.WLVRN)

NOTE: Chart not to scale.

SW-4, 11 JUN 2026 to 09 JUL 2026