

WAAS CH <b>61316</b> <b>W19A</b>	APP CRS <b>188°</b>	Rwy Idg TDZE Apt Elev	<b>5000</b> <b>961</b> <b>969</b>
--	------------------------	-----------------------------	---

# RNAV (GPS) RWY 19

LAFAYETTE MUNI (3M7)

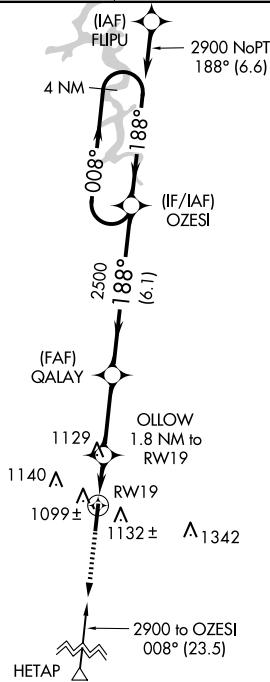
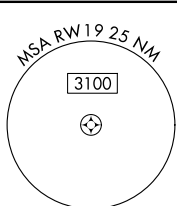
RNP APCH - GPS

▼ For uncompensated Baro-VNAV systems, LNAV/VNAV NA below -16°C or above 46°C.  
 ▲ NA Obtain local altimeter setting on CTAF; when not received, use Bowling Green altimeter setting: increase LPV DA to 1344 feet and all visibilities ½ SM; increase LNAV/VNAV DA to 1502 feet and all visibilities ½ SM; increase all MDAs 140 feet and visibility LNAV Cat C ¼ SM, Cat D ½ SM, and Circling Cat C and D ½ SM. Rwy 19 helicopter visibility reduction below 1 SM NA.

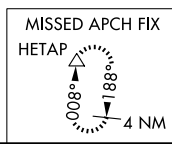
MISSED APPROACH:  
Climb to 3000 direct HETAP and hold.

NASHVILLE APP CON  
**118.4 360.7**

UNICOM  
**122.8 (CTAF)**



▲ 1430



ELEV 969	<b>D</b>	TDZE 961
----------	----------	----------

188°

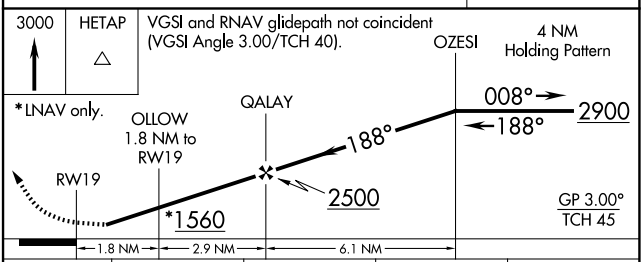
61

0.5% UP

5200 x 75

1

MIRL Rwy 1-19  
REIL Rwy 1 and 19



CATEGORY	A	B	C	D
LPV DA	1211-1		250 (300-1)	
LNAV/VNAV DA	1369-1½		408 (400-1½)	
LNAV MDA	1380-1	419 (500-1)	1380-1¼	419 (500-1¼)
CIRCLING	1440-1	471 (500-1)	1600-1¾ 631 (700-1¾)	1700-2¼ 731 (800-2¼)

SE-1, 11 JUN 2026 to 09 JUL 2026

SE-1, 11 JUN 2026 to 09 JUL 2026