

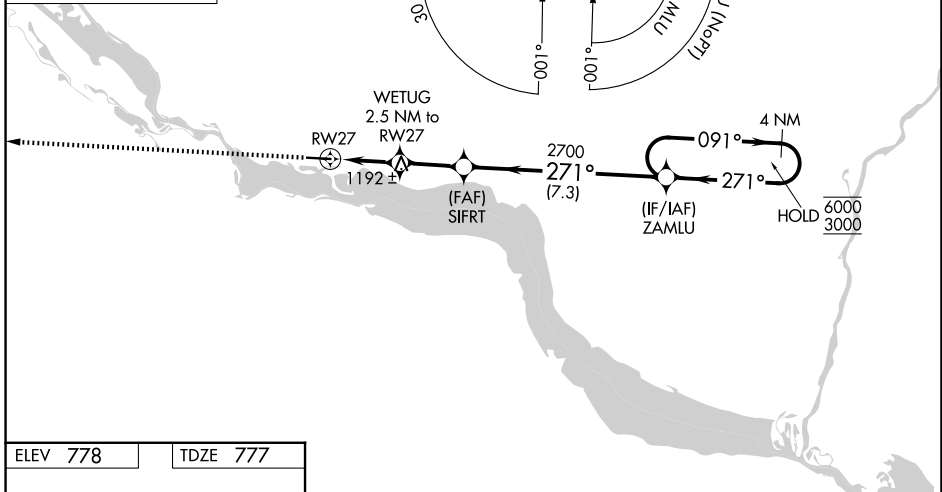
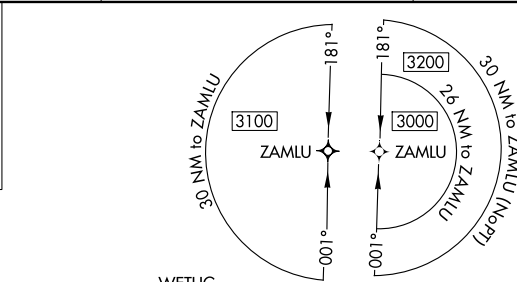
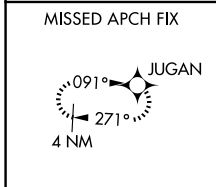
WAAS CH 99547 W27A	APP CRS 271°	Rwy Ldg TDZE Apt Elev	5010 777 778
--	------------------------	-----------------------------	---

RNAV (GPS) RWY 27

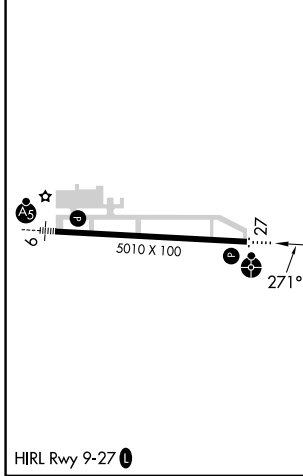
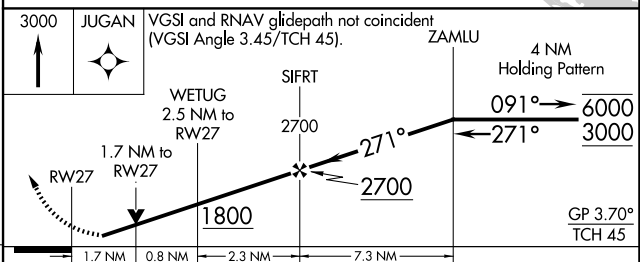
RED WING RGNL (RGK)

RNP APCH - GPS.	ODALS	MISSED APPROACH: Climb to 3000 direct JUGAN and hold.
<p>⚠ Circling Rwy 9 NA at night. For uncompensated Baro-VNAV systems, LNAV/VNAV NA below -16°C or above 54°C. Rwy 27 helicopter visibility reduction below ¾ SM NA.</p>		

AWOS-3 119.25	MINNEAPOLIS APP CON 121.2 335.65	UNICOM 123.05 (CTAF) 0
-------------------------	--	----------------------------------



ELEV 778	TDZE 777
-----------------	-----------------



CATEGORY	A	B	C	D
LPV DA	1046-¾	269 (300-¾)	1077-¾ 300 (300-¾)	NA
LNAV/VNAV DA	1460-1 7/8 683 (700-1 7/8)			NA
LNAV MDA	1460-¾	683 (700-¾)	1460-1 7/8 683 (700-1 7/8)	NA
CIRCLING	1480-1 702 (800-1)	1520-1 742 (800-1)	1640-2 1/2 862 (900-2 1/2)	NA

NC-1, 11 JUN 2026 to 09 JUL 2026

NC-1, 11 JUN 2026 to 09 JUL 2026