

# BLTWY SEVEN DEPARTURE (RNAV)

HOUSTON DEP CON  
134.45 284.0  
CTAF  
122.7

**TOP ALTITUDE:  
ASSIGNED BY ATC**

NOTE: RADAR required.  
NOTE: DME/DME/IRU or GPS required.  
NOTE: RNAV 1.

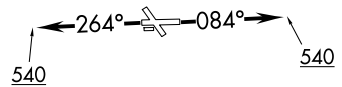
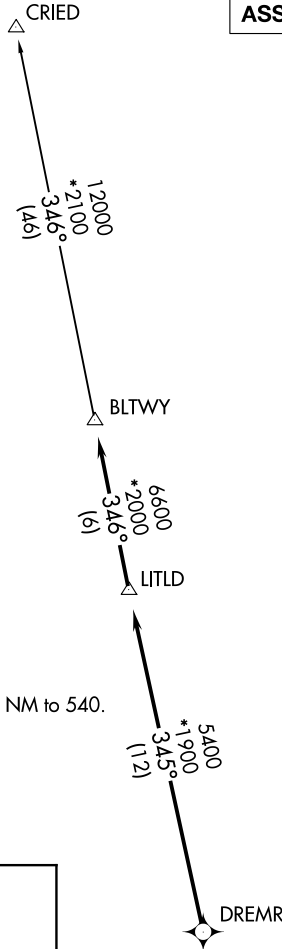
### TAKEOFF MINIMUMS

Rwys 14, 32: NA - Environmental.  
Rwys 8, 26: Standard with minimum climb of 500' per NM to 540.

### ▼ DEPARTURE ROUTE DESCRIPTION

TAKEOFF RUNWAY 8: Climb on heading 084° to 540 for RADAR vectors to DREMR, thence. . .  
TAKEOFF RUNWAY 26: Climb on heading 264° to 540 for RADAR vectors to DREMR, thence. . .  
... on track 345° to LITLD, then on track 346° to BLTWY, then on (transition). Maintain ATC assigned altitude. Expect filed altitude 10 minutes after departure.

### CRIED TRANSITION (BLTWY7.CRIED)



NOTE: Chart not to scale.

# BLTWY SEVEN DEPARTURE (RNAV)

SC-5, 11 JUN 2026 to 09 JUL 2026

SC-5, 11 JUN 2026 to 09 JUL 2026