

# BORRN SIX DEPARTURE (RNAV)

9200 UN 60 of 2026 UN 11 '9-CS

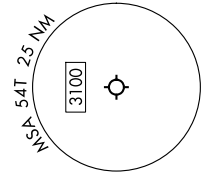
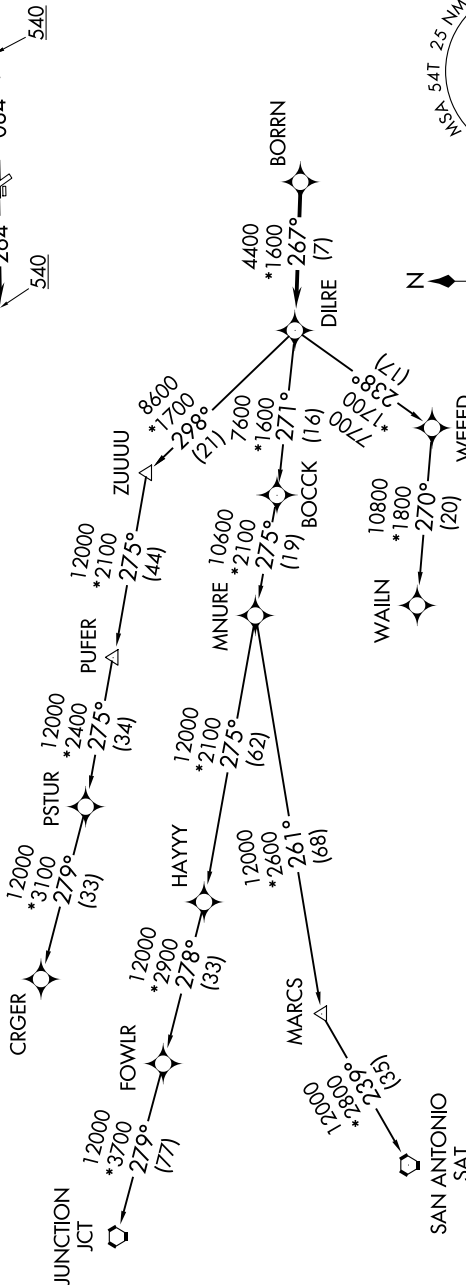
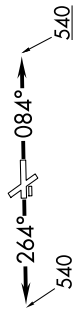
HOUSTON DEP CON  
134.45 284.0  
CTAF  
122.7

RNAV 1 - DME/DME/IRU or GPS.  
RADAR required.

**TOP ALTITUDE:  
ASSIGNED BY ATC**

### TAKEOFF MINIMUMS

Rwys 14, 32: NA - Environmental.  
Rwys 8, 26: Standard with minimum climb  
of 500'/NM to 540.



NOTE: Chart not to scale.

NOTE: CRGR-TRANSITION ATC assigned only  
for aircraft departing 54T, AXH, EFD, GLS,  
HPY, IWS, LBX, LVJ, SGR, TME, T00, T41.

(CONTINUED ON FOLLOWING PAGE)

SC-5, 11 JUN 2026 to 09 JUL 2026

# BORRN SIX DEPARTURE (RNAV)