

# STRYA EIGHT DEPARTURE (RNAV)

HOUSTON DEP CON  
134.45 284.0  
CTAF  
122.7

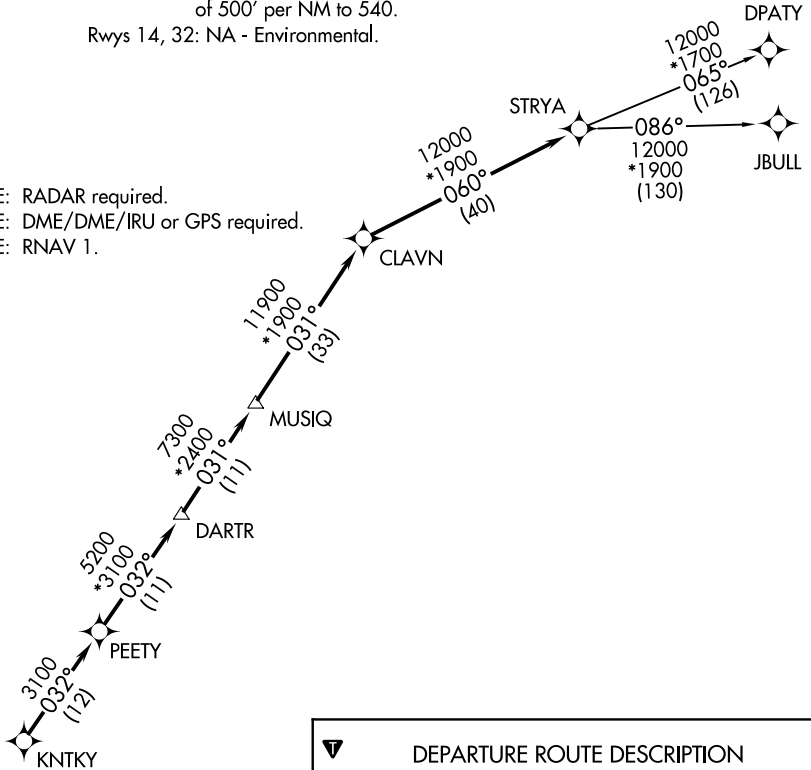
**TOP ALTITUDE:  
ASSIGNED BY ATC**

### TAKEOFF MINIMUMS

Rwys 8, 26: Standard with minimum climb  
of 500' per NM to 540.

Rwys 14, 32: NA - Environmental.

- NOTE: RADAR required.
- NOTE: DME/DME/IRU or GPS required.
- NOTE: RNAV 1.



**DEPARTURE ROUTE DESCRIPTION**

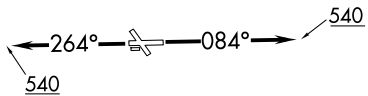
TAKEOFF RUNWAY 8: Climb on heading 084° to 540 for RADAR vectors to KNTKY, thence. . .

TAKEOFF RUNWAY 26: Climb on heading 264° to 540 for RADAR vectors to KNTKY, thence. . .

. . .on track 032° to PEETY, then on track 032° to DARTR, then on track 031° to MUSIQ, then on track 031° to CLAVN, then on track 060° to STRYA, then on (transition). Maintain ATC assigned altitude. Expect filed altitude 10 minutes after departure.

DPATY TRANSITION (STRYA8.DPATY)

JBULL TRANSITION (STRYA8.JBULL)



NOTE: Chart not to scale.

# STRYA EIGHT DEPARTURE (RNAV)

SC-5, 11 JUN 2026 to 09 JUL 2026

SC-5, 11 JUN 2026 to 09 JUL 2026