

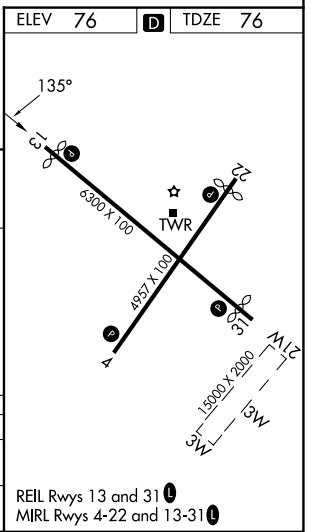
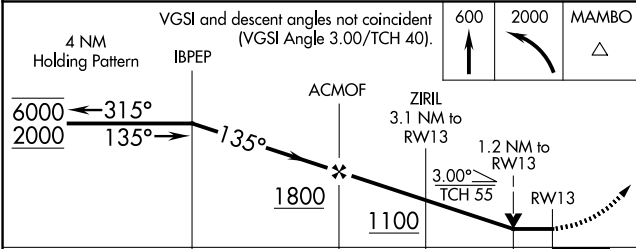
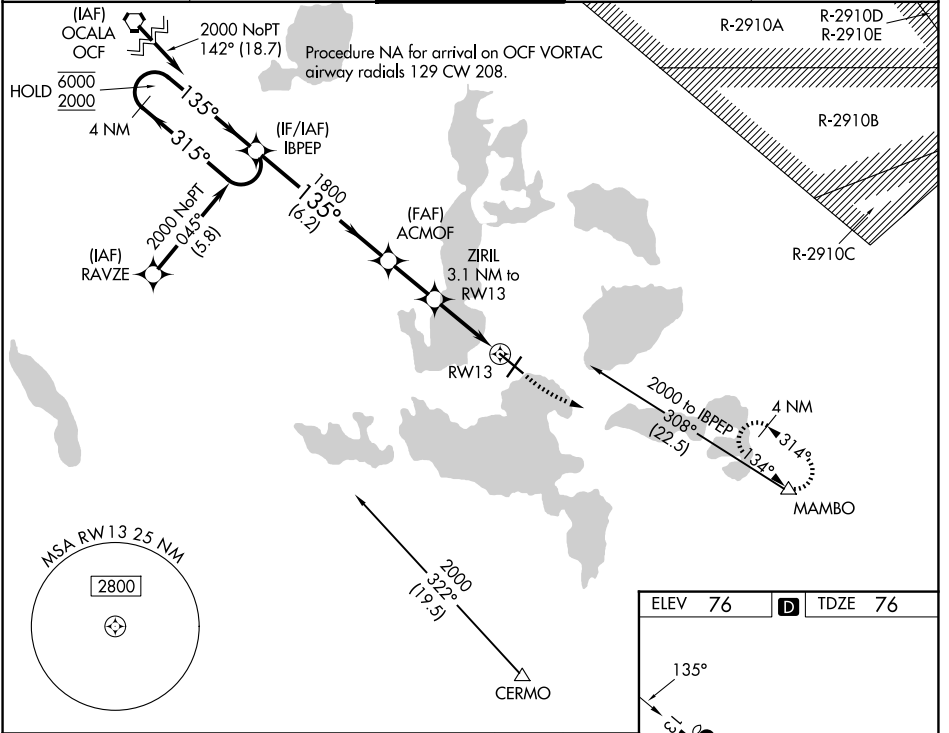
APP CRS	Rwy Ldg	5211
135°	TDZE	76
	Apt Elev	76

RNAV (GPS) RWY 13

LEESBURG INTL (L/E/E)

RNP APCH - GPS.		MISSED APPROACH: Climb to 600 then climbing left turn to 2000 direct MAMBO and hold.
<p>⚠ Circling NA to Rwys 3W and 21W. Rwy 13 helicopter visibility reduction below 3/4 SM NA. ⚠ VDP NA when using Orlando Intl altimeter setting. When local altimeter setting not received, use Orlando Intl altimeter setting and increase all MDAs 100 feet and LNAV visibility Cat C/D 1/4 SM, and Circling visibility Cat C/D 1/4 SM. Circling Rwy 4, 22 NA at night.</p>		

ATIS 134.325	ORLANDO APP CON 135.3 351.9	LEESBURG TOWER ★ 119.35 (CTAF) 0	GND CON 121.725	UNICOM 122.725
------------------------	---------------------------------------	--	---------------------------	--------------------------



CATEGORY	A	B	C	D
INAV MDA	500-1	424 (500-1)	500-1¼	424 (500-1¼)
CIRCLING	700-1	624 (700-1)	780-2 704 (800-2)	780-2¼ 704 (800-2¼)

SE-3, 11 JUN 2026 to 09 JUL 2026

SE-3, 11 JUN 2026 to 09 JUL 2026