

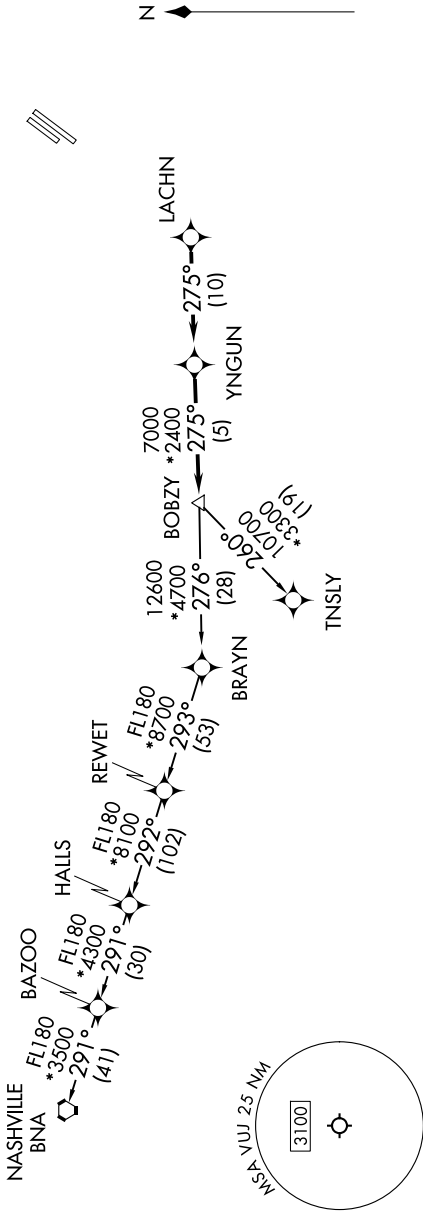
# BOBZY SIX DEPARTURE (RNAV)

**TOP ALTITUDE:**  
3000

RNAV 1 - DME/DME/IRU or GPS.  
RADAR required.

CHARLOTTE DEP CON  
128.325 307.8  
AWOS-3  
128.175  
CLNC DEL  
121.75 254.375  
GND CON  
121.75 254.375  
STANLY COUNTY TOWER ★  
126.275 (CTAF) 291.9

TAKEOFF MINIMUMS  
Rwys 4L, 22R: NA - Environmental.  
Rwy 22L: Standard.  
Rwy 4R: 300-1 $\frac{3}{4}$  or standard with minimum climb of 315'/NM to 1000.



## DEPARTURE ROUTE DESCRIPTION

▲ Climb on heading assigned by ATC, for RADAR vectors to LACHN, then on depicted route to BOBZY, then on assigned transition. Maintain 3000. Expect filed altitude 10 minutes after departure.

NASHVILLE TRANSITION (BOBZY6 BNA)  
TNSLY TRANSITION (BOBZY6 TNSLY)

NOTE: Turbojet only.  
NOTE: If unable to accept climb rates, advise ATC on initial contact.  
NOTE: Transponder code will be issued via PDC or Charlotte CLNC DEL.  
NOTE: Upon reaching 10000 MSL, accelerate to and maintain 280K, if unable advise ATC.

NOTE: Chart not to scale.