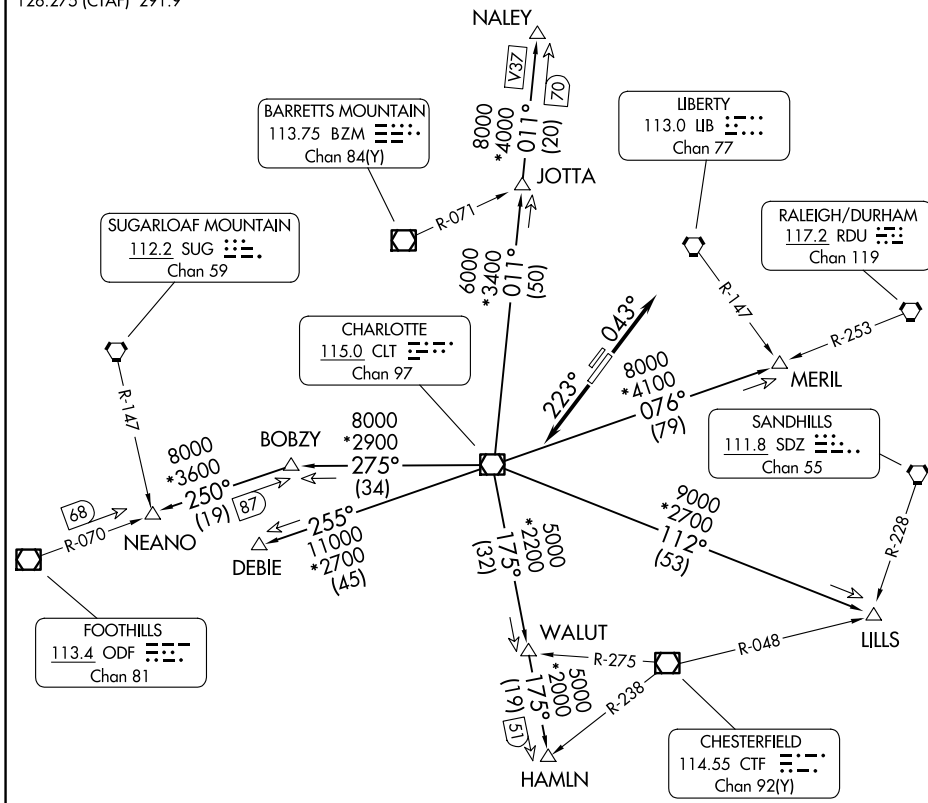


# KERMIT FIVE DEPARTURE

CHARLOTTE DEP CON  
128.325 307.8  
AWOS-3  
128.175  
CLNC DEL  
121.75 254.375  
GND CON  
121.75 254.375  
STANLY COUNTY TOWER\*  
126.275 (CTAF) 291.9

RADAR and DME required.

**TOP ALTITUDE:  
3000**



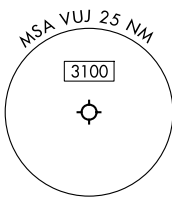
SE-2, 11 JUN 2026 to 09 JUL 2026

SE-2, 11 JUN 2026 to 09 JUL 2026

### TAKEOFF MINIMUMS

Rwys 4L, 22R: NA - Environmental.  
Rwy 22L: Standard.  
Rwy 4R: 300-1 $\frac{3}{4}$  or standard with minimum climb of 315'/NM to 1000.

NOTE: Turbojets only.  
NOTE: Upon reaching 10000 MSL, accelerate to and maintain 280K, if unable advise ATC.  
NOTE: Transponder code will be issued via Charlotte clearance delivery.



NOTE: Chart not to scale.

(CONTINUED ON FOLLOWING PAGE)