

KILNS SIX DEPARTURE (RNAV)

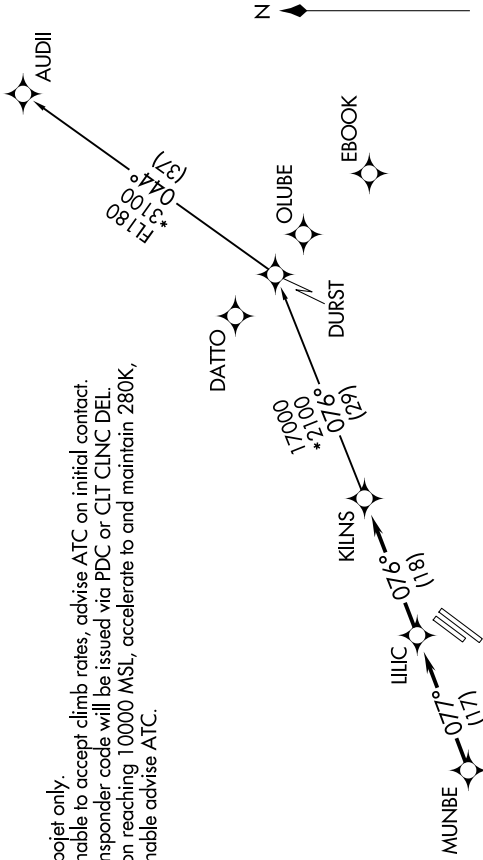
SE-2, 11 JUN 2026 to 09 JUL 2026

CHARLOTTE DEP CON
128.325 307.8
AWOS-3
128.175
CLNC DEL
121.75 254.375
GND CON
121.75 254.375
STANLY COUNTY TOWER*
126.275 (CTAF) 291.9

RNAV 1 - DME/DME/IRU or GPS.
RADAR required.

NOTE: Turbojet only.
NOTE: If unable to accept climb rates, advise ATC on initial contact.
NOTE: Transponder code will be issued via PDC or CLT CLNC DEL.
NOTE: Upon reaching 10000 MSL, accelerate to and maintain 280K, if unable advise ATC.

TOP ALTITUDE:
3000



TAKEOFF MINIMUMS

Rwys 4L, 22R: NA - Environmental.
Rwy 22L: Standard.
Rwy 4R: 300-1 $\frac{3}{4}$ or standard with minimum climb of 315'/NM to 1000.

DEPARTURE ROUTE DESCRIPTION

Climb on heading assigned by ATC for RADAR vectors to MUNBE, then on depicted route to KILNS. Then on AUDII Transition. Maintain 3000, expect filed altitude 10 minutes after departure.

AUDII TRANSITION (KILNS6..AUDII)

NOTE: Chart not to scale.

KILNS SIX DEPARTURE (RNAV)

SE-2, 11 JUN 2026 to 09 JUL 2026