

|  |                        |                             |   |
|--|------------------------|-----------------------------|---|
| WAAS<br>CH <b>49117</b><br><b>W04A</b> | APP CRS<br><b>043°</b> | Rwy Ldg<br>TDZE<br>Apt Elev | <b>5499</b><br><b>609</b><br><b>609</b> |
|--|------------------------|-----------------------------|---|

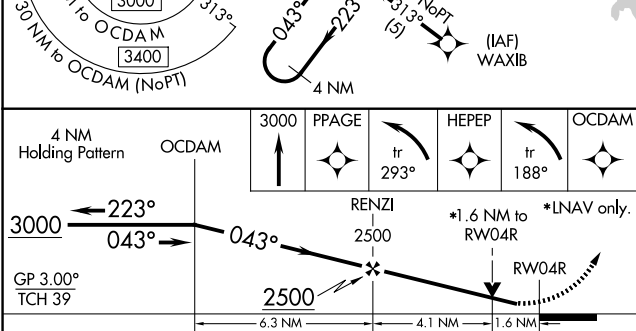
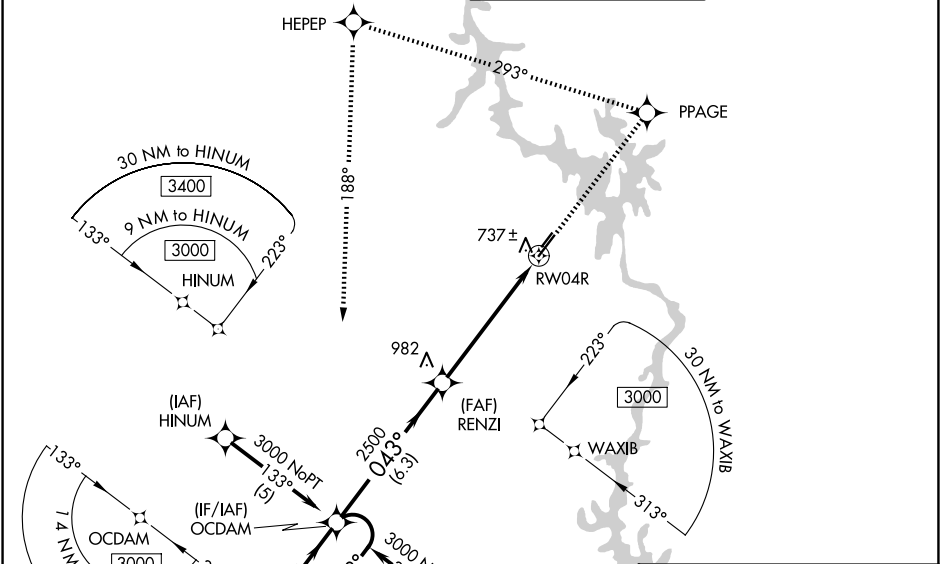
# RNAV (GPS) RWY 4R

STANLY COUNTY (VUJ)

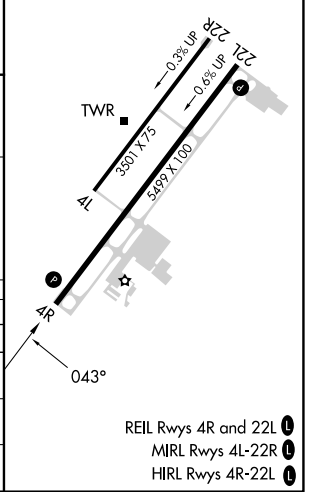
**PAR** Circling to Rwy 4L/22R NA at night. For uncompensated Baro-VNAV systems, LNAV/VNAV NA below -16°C (4°F) or above 47°C (116°F). DME/DME RNP-0.3 NA. Visibility reduction by helicopters NA. When local altimeter setting not received, use Asheboro altimeter setting and increase LPV DA to 929, LNAV/VNAV DA to 1083, and all MDA 60 feet; increase LPV all Cats, LNAV/VNAV all Cats, LNAV Cats C and D, and Circling Cats C and D visibility ¼ mile. Baro-VNAV NA when using Asheboro altimeter setting. VDP NA with Asheboro altimeter setting.

MISSED APPROACH: Climb to 3000 direct PPAGE and left turn on track 293° to HEPEP and left turn on track 188° to OCDAM and hold.

|                          |   |   |                                  |
|--------------------------|---|---|----------------------------------|
| AWOS-3<br><b>128.175</b> | CHARLOTTE APP CON<br><b>128.325 307.8</b> | STANLY COUNTY TOWER★<br><b>126.275 (CTAF) 0 291.9</b> | GND CON<br><b>121.75 254.375</b> |
|--------------------------|---|---|----------------------------------|



|          |          |
|----------|----------|
| ELEV 609 | TDZE 609 |
|----------|----------|



| CATEGORY     | A                    | B                    | C                    | D                    |
|--------------|----------------------|----------------------|----------------------|----------------------|
| LPV DA       | 876-1 267 (300-1)    |                      |                      |                      |
| LNAV/VNAV DA | 1030-1½ 421 (500-1½) |                      |                      |                      |
| LNAV MDA     | 1160-1 551 (600-1)   | 1160-1½ 551 (600-1½) | 1160-1¾ 551 (600-1¾) | 1160-1¾ 551 (600-1¾) |
| CIRCLING     | 1260-1 651 (700-1)   | 1260-1¾ 651 (700-1¾) | 1380-2½ 771 (800-2½) |                      |

- REIL Rwy 4R and 22L
- MIRL Rwy 4L-22R
- HIRL Rwy 4R-22L

SE-2, 11 JUN 2026 to 09 JUL 2026

SE-2, 11 JUN 2026 to 09 JUL 2026