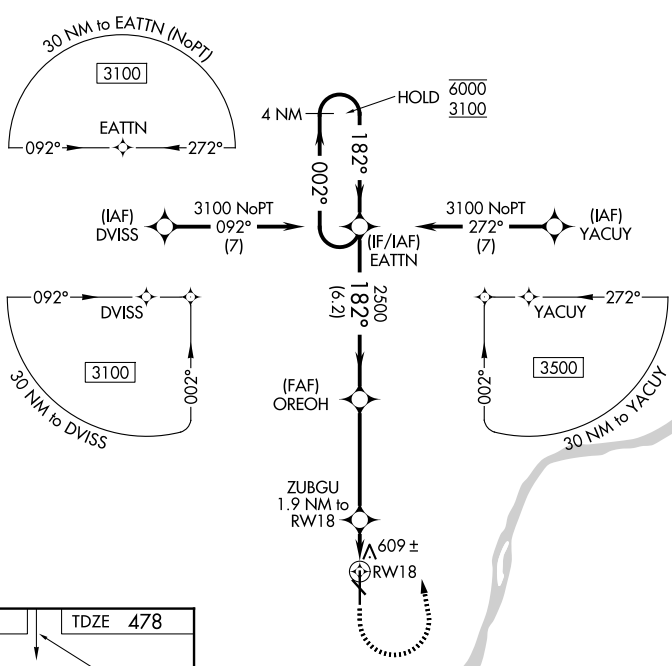


WAAS CH <b>82426</b>	APP CRS <b>182°</b>	Rwy Ldg TDZE Apt Elev	<b>7000</b> <b>478</b> <b>478</b>
<b>W18A</b>			

# RNAV (GPS) RWY 18

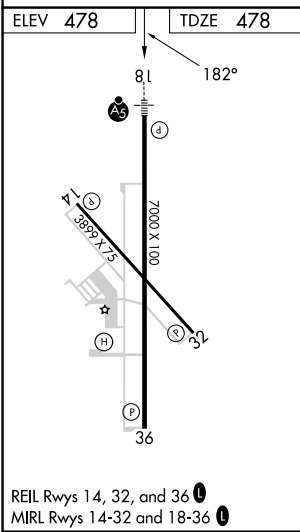
CLARK RGNL (JVY)

RNP APCH - GPS.		MALSR	MISSED APPROACH: Climb to 900 then climbing left turn to 3100 direct EATTN and hold.
<p>⚠ Circling NA for Cat D southwest of Rws 14 and 36. Circling Rwy 14, 32, 36 NA at night. For uncompensated Baro-VNAV systems, LNAV/VNAV NA below -15°C or above 54°C. For inop ALS increase LNAV/VNAV visibility to 1 SM.</p>			
AWOS-3T <b>118,575</b>	LOUISVILLE APP CON <b>132,075 327.0</b>	CLNC DEL <b>118,05</b>	UNICOM <b>122.7 (CTAF) 0</b>



EC-2, 11 JUN 2026 to 09 JUL 2026

EC-2, 11 JUN 2026 to 09 JUL 2026



900	3100	EATTN	4 NM Holding Pattern	
ZUBGU 1.9 NM to RWY 18		OREOH 2500	002° → 6000	← 182° 3100
RWY 18 1120		2500	GP 3.00° TCH 51	
1 NM - 0.9 NM - 4.3 NM - 6.2 NM				
CATEGORY	A	B	C	D
LPV DA		678-½	200 (200-½)	
LNAV/VNAV DA		852-⅝	374 (400-⅝)	
LNAV MDA	860-½	382 (400-½)	860-⅝	382 (400-⅝)
CIRCLING	1000-1 522 (600-1)	1040-1 562 (600-1)	1060-1½ 582 (600-1½)	1100-2 622 (700-2)