

BONHAM, TEXAS

AL-6722 (FAA)

25219

VORTAC BYP 114.6 Chan 93	APP CRS 202°	Rwy Ldg 4000 TDZE 618 Apt Elev 618
--	------------------------	---

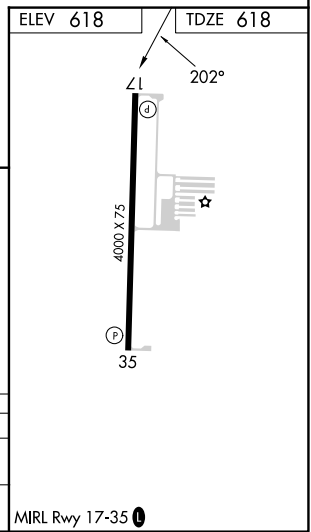
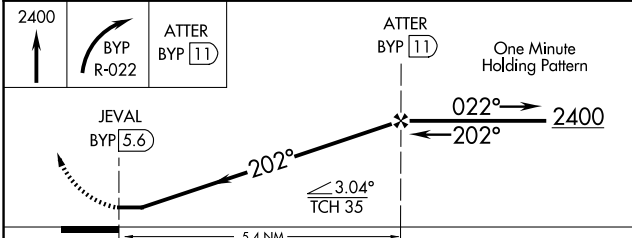
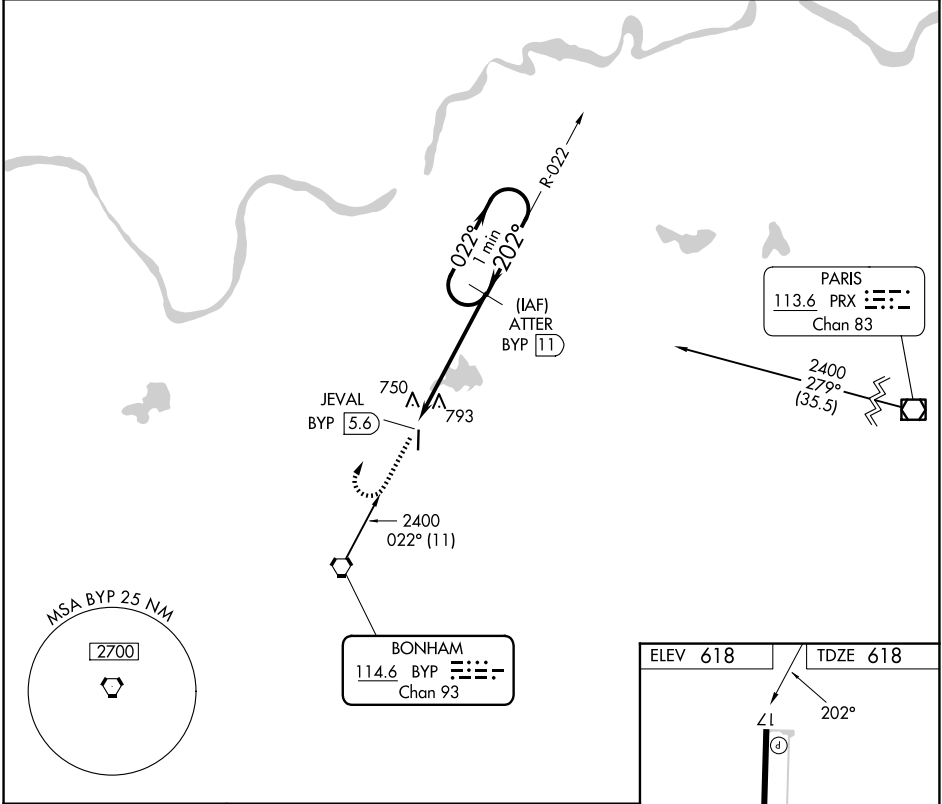
VOR/DME RWY 17

JONES FLD (F00)

NA When local altimeter setting not received, use Durant altimeter setting.

MISSED APPROACH: Climb to 2400, then right turn via BYP R-022 to ATTER/11 DME and hold.

AWOS-3 PT 118.05	FORT WORTH CENTER 124.875 370.95	UNICOM 122.8(CTAF)
----------------------------	--	------------------------------



CATEGORY	A	B	C	D
S-17	1200-1	582 (600-1)		NA
CIRCLING	1240-1 622 (700-1)	1400-1 782 (800-1)		NA

BONHAM, TEXAS
Amdt 1B 20MAY21

33°37'N-96°11'W

VOR/DME RWY 17

JONES FLD (F00)

SC-2, 11 JUN 2026 to 09 JUL 2026

SC-2, 11 JUN 2026 to 09 JUL 2026