

APP CRS	Rwy Ldg	<b>7000</b>
<b>259°</b>	TDZE	<b>5537</b>
	Apt Elev	<b>5537</b>

# RNAV (RNP) Y RWY 26

RIFLE GARFIELD COUNTY (R.I.L)

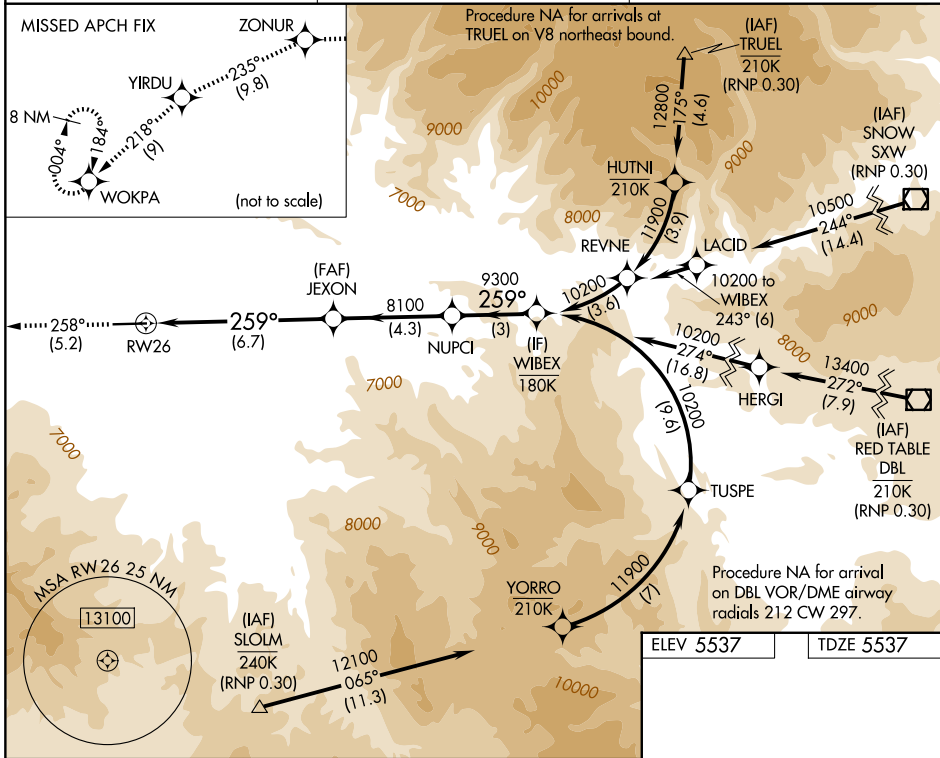
RNP AR APCH - GPS. Authorization required. From TRUEL or SLOUM: RF.



MISSED APPROACH: Climb to 14000 on track 258° to ZONUR and on track 235° to YIRDU and on track 218° to WOKPA and hold, continue climb-in-hold to 14000.

**⚠** For uncompensated Baro-VNAV systems, procedure NA below -21°C or above 35°C. Inop table does not apply.  
**🌃** -13°C When VGSI inop, procedure NA at night.

ASOS <b>135,275</b>	DENVER CENTER <b>134.95 327.075</b>	UNICOM <b>122.8 (CTAF)</b>
------------------------	--	-------------------------------

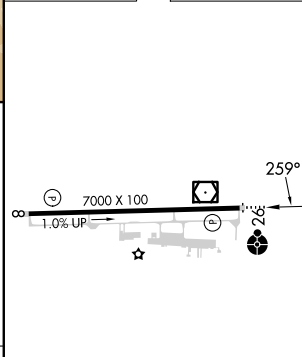


SW-1, 11 JUN 2026 to 09 JUL 2026

SW-1, 11 JUN 2026 to 09 JUL 2026

14000	ZONUR	YIRDU	WOKPA	WIBEX
tr 258°	tr 235°	tr 218°		
	JEXON	NUPCI		
	8100	9300		10200
	8100			
	6.7 NM	4.3 NM	3 NM	

ELEV 5537	TDZE 5537
-----------	-----------



CATEGORY	A	B	C	D
RNP 0.30 DA		6395-2½	858 (900-2½)	

**AUTHORIZATION REQUIRED**

HIRL Rwy 8-26  
REIL Rwy 8