

APP CRS	Rwy Ldg	7000
078°	TDZE	5498
	Apt Elev	5537

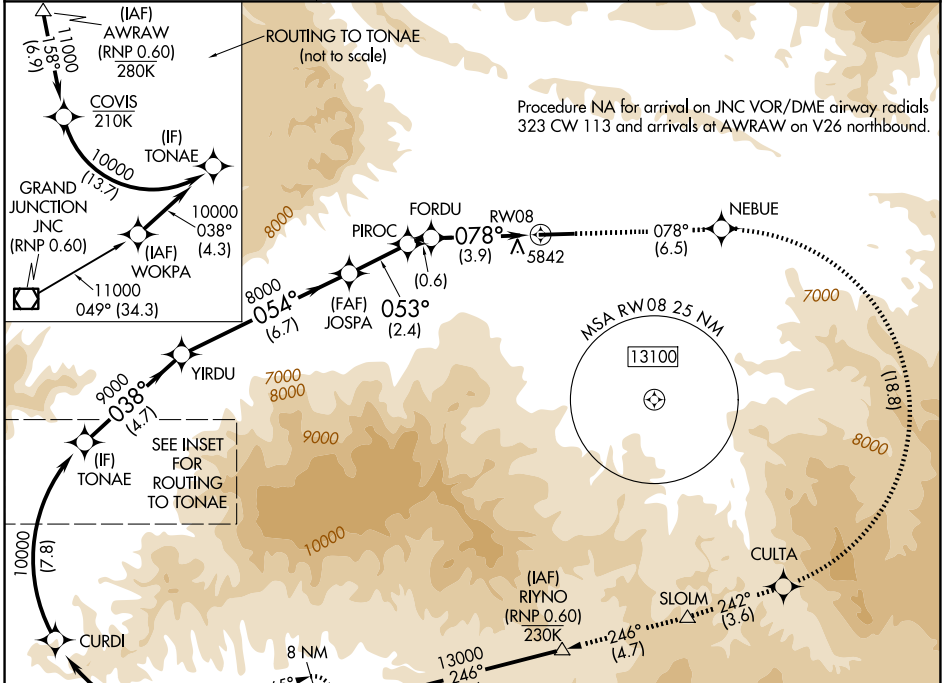
RNAV (RNP) Z RWY 8

RIFLE GARFIELD COUNTY (R.I.L.)

RF and GPS required. Procedure NA for wingspans greater than 136 feet.
 For uncompensated Baro-VNAV systems, procedure NA below -24°C (-11°F) or above 54°C (130°F).
 *Missed approach requires minimum climb of 425 feet per NM to 11300.
 **Missed approach requires minimum climb of 425 feet per NM to 10000; if unable, see RNAV (GPS) Y RWY 8.

MISSED APPROACH: Climb to 13000 on track 078° to NEBUE, right turn to CULTA, and track 242° to SLOLM and track 246° to RYNO and track 246° to HUGSI and hold.

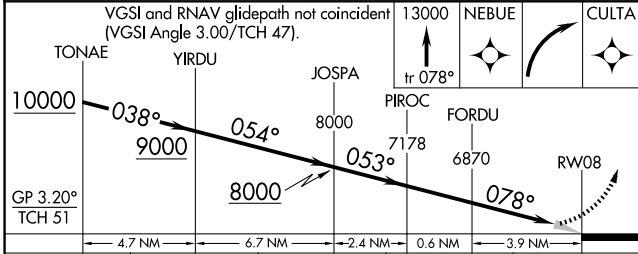
ASOS 135.275	DENVER CENTER 134.95 327.075	UNICOM 122.8 (CTAF) 0
------------------------	--	---------------------------------



SW-1, 11 JUN 2026 to 09 JUL 2026

SW-1, 11 JUN 2026 to 09 JUL 2026

ELEV 5537	TDZE 5498
-----------	-----------



CATEGORY	A	B	C	D
RNP 0.10 DA*	5748-1	250 (300-1)		NA
RNP 0.30 DA**	6391-3	893 (900-3)		NA

AUTHORIZATION REQUIRED

HIRL Rwy 8-26 **0**
 REIL Rwy 8 **0**