

WAAS CH 93708 W26A	APP CRS 259°	Rwy Ldg TDZE Apt Elev	7000 5537 5537
--	------------------------	-----------------------------	---

RNAV (GPS) X RWY 26

RIFLE GARFIELD COUNTY(R.I.L)

RNP APCH - GPS.

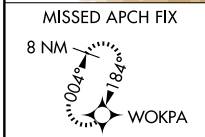
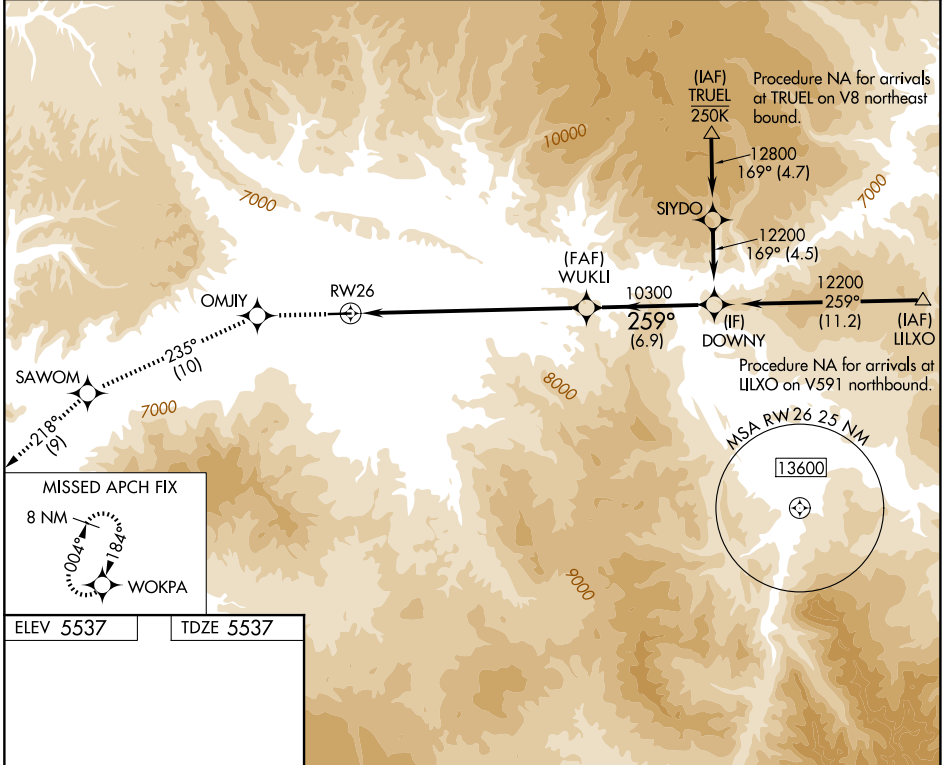
NA For inop ALS, increase LPV all Cats visibility to 2 1/2 SM.

-13°C

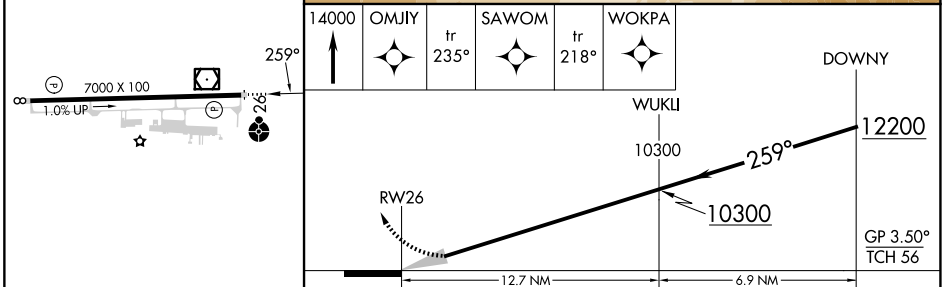
ODALS

MISSED APPROACH: Climb to 14000 direct OMJIY and on track 235° to SAWOM and on track 218° to WOKPA and hold, continue climb-in-hold to 14000. Missed approach requires a minimum climb gradient of 290 feet per NM to 9600 feet; if unable to meet climb gradient, see RNAV (GPS) W RWY 26.

ASOS 135.275	DENVER CENTER 134.95 327.075	UNICOM 122.8 (CTAF) 0
------------------------	--	---------------------------------



ELEV 5537	TDZE 5537
------------------	------------------



CATEGORY	A	B	C	D
LPV DA	6300-2		763 (800-2)	