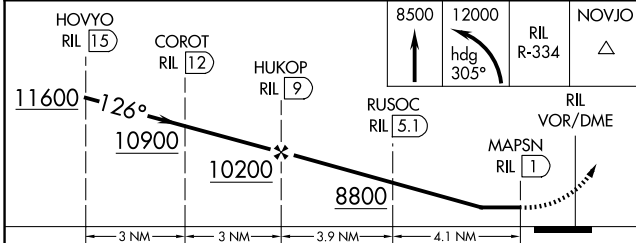
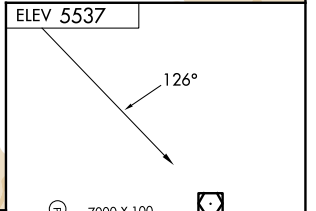
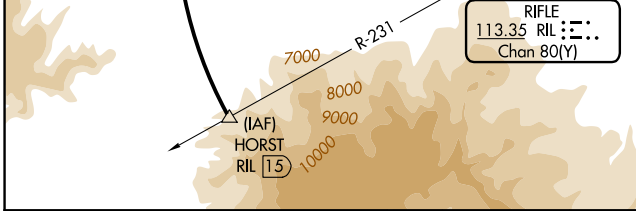
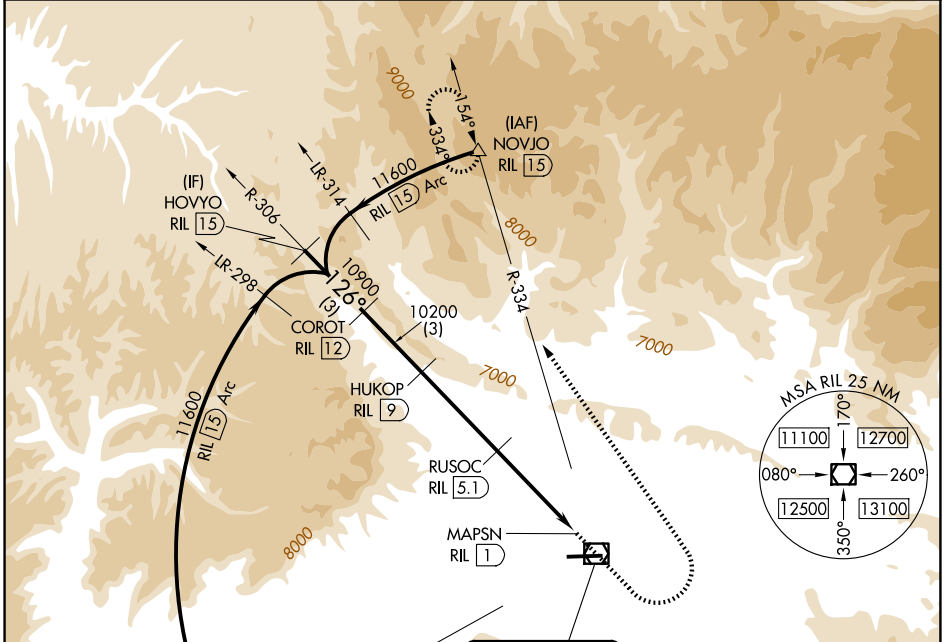


VOR/DME RIL 113.35 Chan 80 (Y)	APP CRS 126°	Rwy Ldg TDZE Apt Elev N/A N/A 5537
--	------------------------	---

VOR/DME-C
RIFLE GARFIELD COUNTY (RIL)

<p>⚠ Circling NA south of Rwy 8-26 at night.</p> <p>❄ -13°C</p>	<p>MISSED APPROACH: Climb to 8500 then climbing left turn 12000 on heading 305° and RIL VOR/DME R-334 to NOVJO/15 DME and hold, continue climb-in-hold to 12400.</p>
---	--

ASOS 135.275	DENVER CENTER 134.95 327.075	UNICOM 122.8 (CTAF) 0
------------------------	--	--



CATEGORY	A	B	C	D
CIRCLING	7360-1¼ 1823 (1900-1¼)	7360-1½ 1823 (1900-1½)	7360-3 1823 (1900-3)	NA

HOVYO RIL 15	COROT RIL 12	HUKOP RIL 9	8500	12000	RIL R-334	NOVJO
11600	10900	10200	RUSOC RIL 5.1	8800	RIL VOR/DME	
					MAPSN RIL 1	
3 NM			3.9 NM		4.1 NM	
HIRL Rwy 8-26 0						
REIL Rwy 8 0						

SW-1, 11 JUN 2026 to 09 JUL 2026

SW-1, 11 JUN 2026 to 09 JUL 2026