

APP CRS	Rwy Idg	<b>3010</b>
<b>326°</b>	TDZE	<b>390</b>
	Apt Elev	<b>391</b>

# RNAV (GPS) RWY 33

CALDWELL MUNI (RWV)

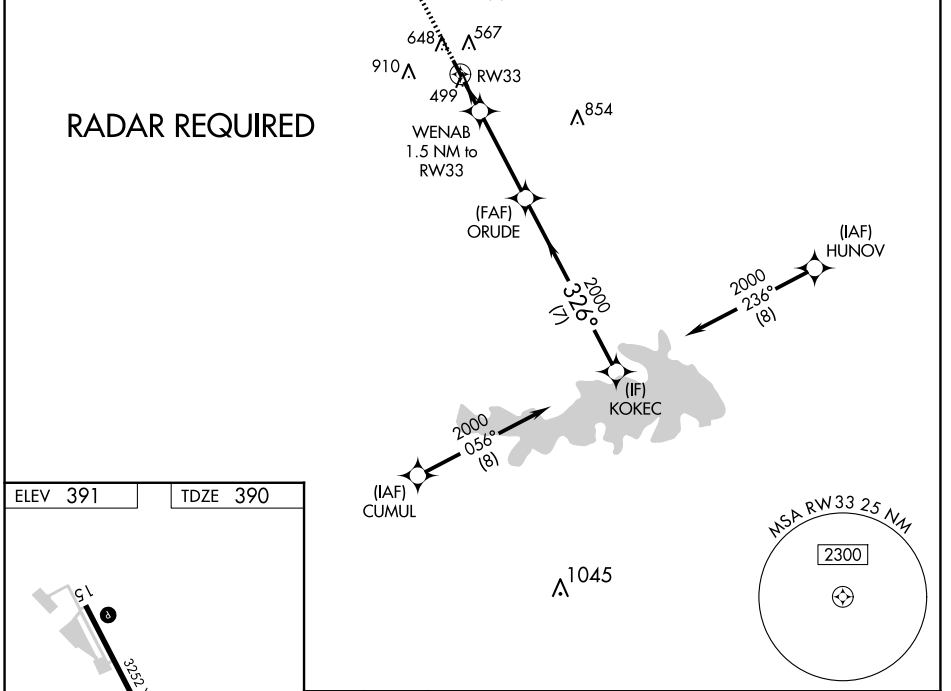
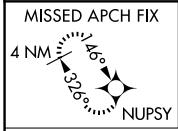
**⚠** When local altimeter setting not received, use College Station altimeter setting and increase all MDA 60 feet. Circling NA east of Rwy 15-33. DME/DME RNP-0.3 NA. Procedure NA at night. Rwy 33 helicopter visibility reduction below 1 SM NA.

**MISSED APPROACH:** Climb to 2500 direct NUPSY and hold.

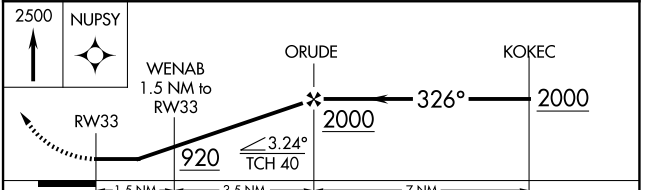
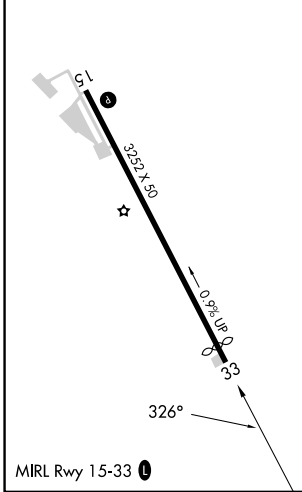
AWOS-3PT  
**118.35**

HOUSTON APP CON  
**134.3 360.85**

CTAF  
**122.9**



ELEV 391	TDZE 390
----------	----------



CATEGORY	A	B	C	D
LNAV MDA	760-1	370 (400-1)	NA	
CIRCLING	1000-1 609 (700-1)	1220-1¼ 829 (900-1¼)	NA	

# RNAV (GPS) RWY 33

CALDWELL MUNI (RWV)

SC-5, 11 JUN 2026 to 09 JUL 2026

SC-5, 11 JUN 2026 to 09 JUL 2026