

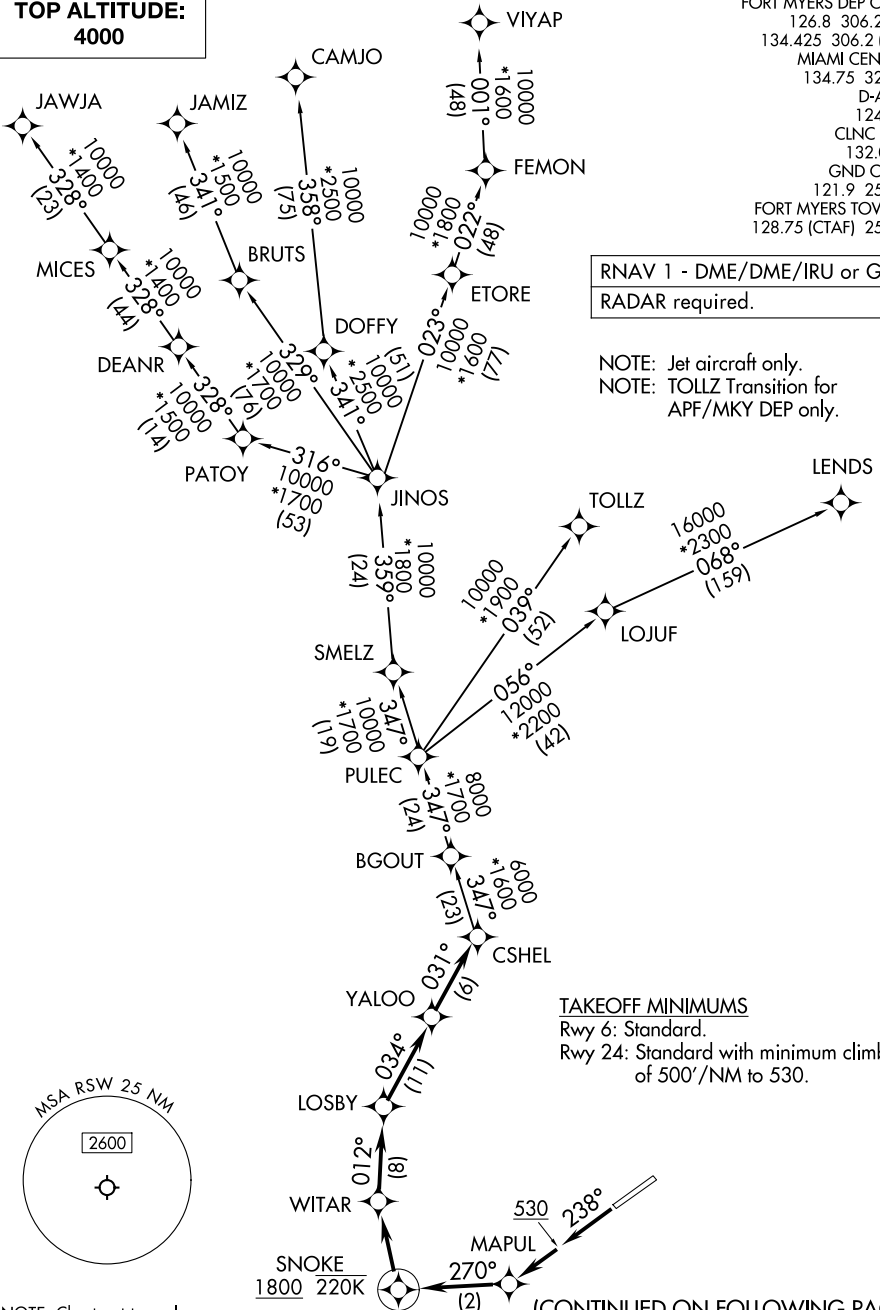
CSHEL EIGHT DEPARTURE (RNAV)

**TOP ALTITUDE:
4000**

FORT MYERS DEP CON ★
 126.8 306.2 (6)
 134.425 306.2 (24)
 MIAMI CENTER
 134.75 322.5
 D-ATIS
 124.65
 CLNC DEL
 132.075
 GND CON
 121.9 257.8
 FORT MYERS TOWER ★
 128.75 (CTAF) 257.8

RNAV 1 - DME/DME/IRU or GPS.
 RADAR required.

NOTE: Jet aircraft only.
 NOTE: TOLLZ Transition for
 APF/MKY DEP only.



NOTE: Chart not to scale.

TAKEOFF MINIMUMS
 Rwy 6: Standard.
 Rwy 24: Standard with minimum climb
 of 500'/NM to 530.

(CONTINUED ON FOLLOWING PAGE)

CSHEL EIGHT DEPARTURE (RNAV)

SE-3, 11 JUN 2026 to 09 JUL 2026

SE-3, 11 JUN 2026 to 09 JUL 2026