

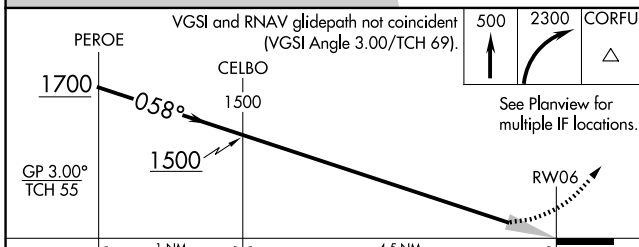
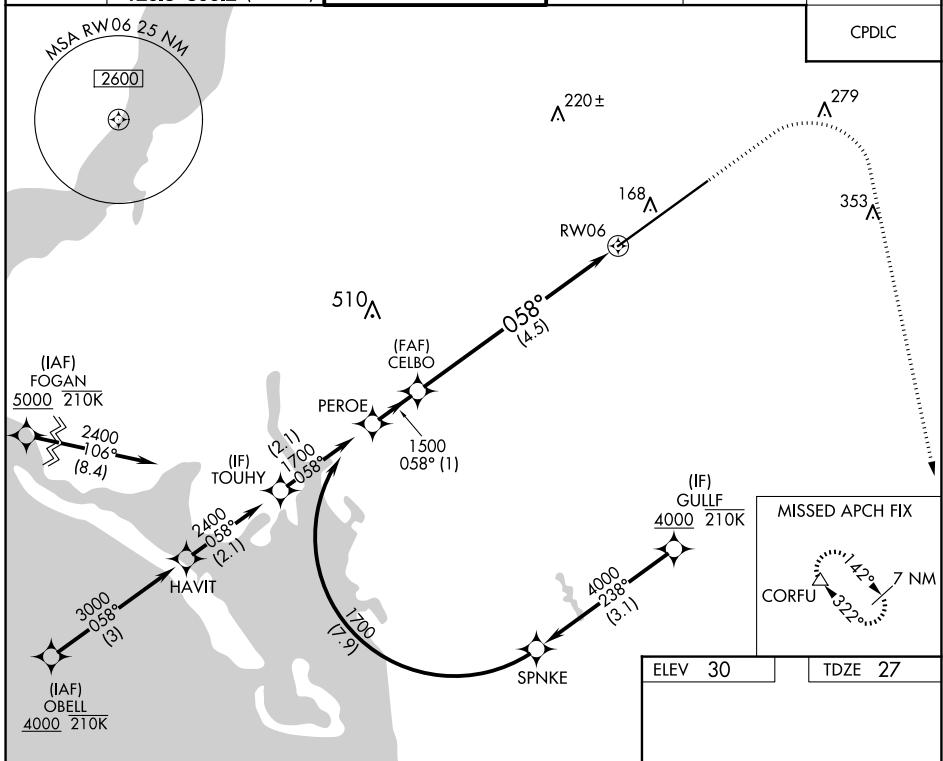
APP CRS	Rwy Idg <b>12000</b>
<b>058°</b>	TDZE <b>27</b>
	Apt Elev <b>30</b>

# RNAV (RNP) Z RWY 6

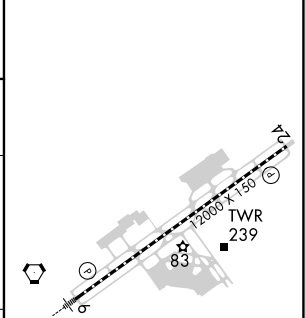
SOUTHWEST FLORIDA INTL (RSW)

RNP AR APCH - GPS.	MALSR	MISSED APPROACH: Climb to 500 then climbing right turn to 2300 direct CORFU and hold, continue climb-in-hold to 2300.
For uncompensated Baro-VNAV systems, procedure NA below 4°C or above 54°C.		

D-ATIS	FORT MYERS APP CON ★	FORT MYERS TOWER ★	GND CON	CLNC DEL	UNICOM
<b>124.65</b>	<b>125.15 306.2</b> (RWY 6) <b>126.8 306.2</b> (RWY 24)	<b>128.75</b> (CTAF) <b>257.8</b>	<b>121.9 257.8</b>	<b>132.075</b>	<b>122.95</b>



ELEV 30	TDZE 27
---------	---------



CATEGORY	A	B	C	D
RNP 0.11 DA		296/24	269 (300-½)	
RNP 0.30 DA		375/30	348 (400-⅝)	

**AUTHORIZATION REQUIRED**

SE-3, 11 JUN 2026 to 09 JUL 2026

SE-3, 11 JUN 2026 to 09 JUL 2026