

| | | |
|--|------------------------|--|
| WAAS CH 65619 W06A | APP CRS 058° | Rwy Idg 12000 TDZE 27 Apt Elev 30 |
|--|------------------------|--|

RNAV (GPS) Y RWY 6

SOUTHWEST FLORIDA INTL (RSW)

RNP APCH - GPS.

▼ For uncompensated Baro-VNAV systems, LNAV/VNAV NA below 4°C or above 54°C. For inop ALS, increase LNAV/VNAV all Cats visibility to RVR 5500, and LNAV Cats C and D visibility to RVR 5500.

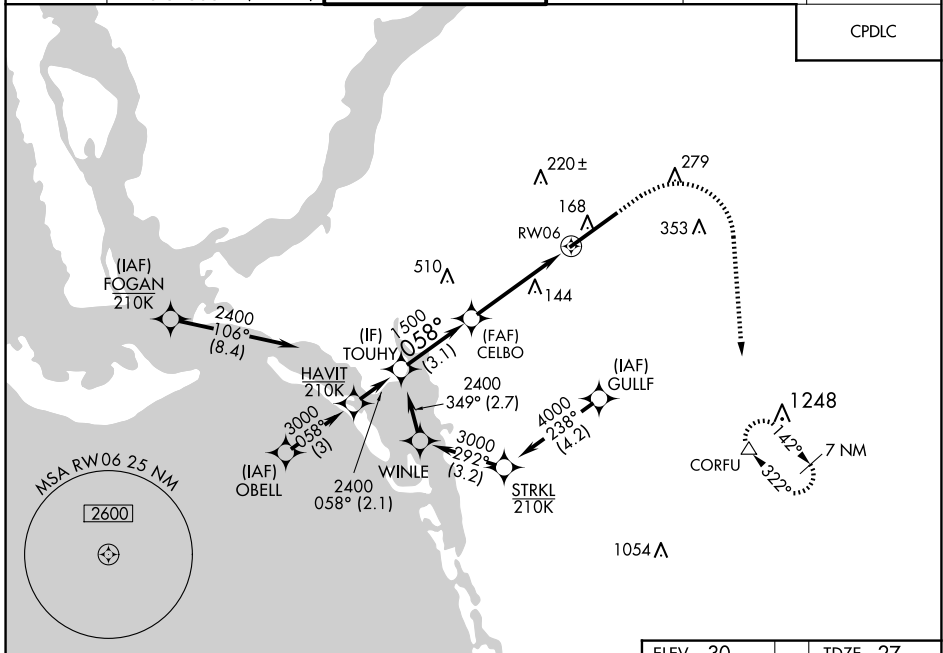
MALSR



MISSED APPROACH: Climb to 1000 then climbing right turn to 2300 direct CORFU and hold.

| | | | | | |
|-------------------------|--|---|-------------------------------|----------------------------|-------------------------|
| D-ATIS 124.65 | FORT MYERS APP CON ★ 125.15 306.2 (RWY 6) 126.8 306.2 (RWY 24) | FORT MYERS TOWER ★ 128.75 (CTAF) 0 257.8 | GND CON 121.9 257.8 | CLNC DEL 132.075 | UNICOM 122.95 |
|-------------------------|--|---|-------------------------------|----------------------------|-------------------------|

CPDLC



SE-3, 11 JUN 2026 to 09 JUL 2026

SE-3, 11 JUN 2026 to 09 JUL 2026

| | | | | | |
|---|--------|-------------|-----------------------|----------------------|--|
| | | ELEV 30 | | TDZE 27 | |
| VGSi and RNAV glidepath not coincident (VGSi Angle 3.00/TCH 69). | | | | | |
| TOUHY | | CELBO | | RWY 6 | |
| 2400 | | 1500 | | 1 NM to RWY 6 | |
| GP 3.00° | | 1500 | | CORFU | |
| TCH 55 | | 058° | | 1000 2300 | |
| 3.1 NM | | 3.5 NM | | 1 NM | |
| CATEGORY | A | B | C | D | |
| LPV DA | | 227/18 | 200 (200-½) | | |
| LNAV/VNAV DA | | 392/35 | 365 (400-¾) | | |
| LNAV MDA | 400/24 | 373 (400-½) | 400/35 | 373 (400-¾) | |
| CIRCLING | 560-1 | 530 (600-1) | 580-1½ 550 (600-½) | 660-2 630 (700-2) | |

REIL Rwy 24
TDZ/CL Rwy 6
HIRL Rwy 6-24