

WAAS CH 97734 W36A	APP CRS 357°	Rwy Ldg 4100 TDZE 1151 Apt Elev 1153
--	------------------------	---

RNAV (GPS) RWY 36

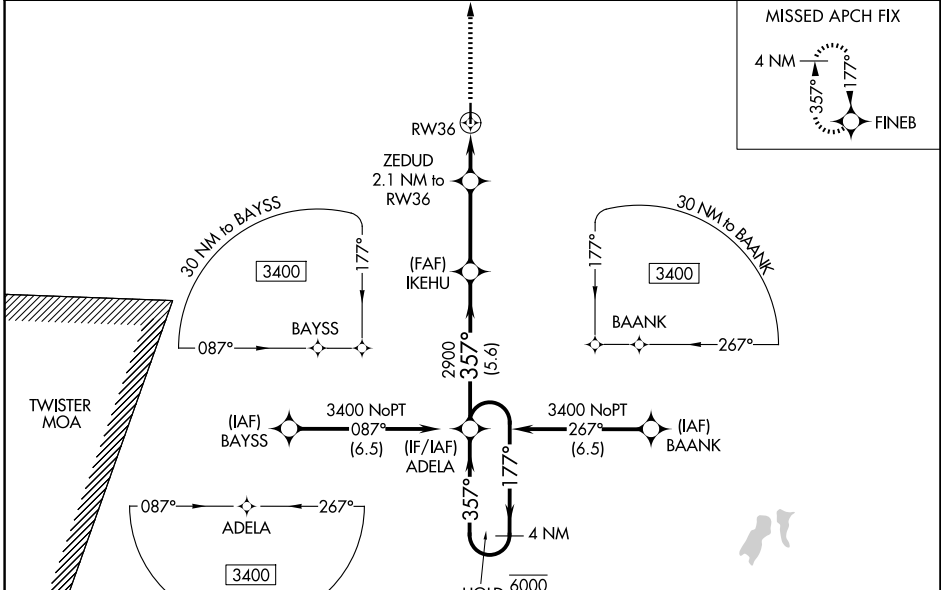
ABILENE MUNI (K78)

RNP APCH - GPS.

⚠ NA For uncompensated Baro-VNAV systems, procedure NA below -17°C or above 54°C.
Baro-VNAV and VDP NA when using SLN altimeter setting. When local altimeter setting not received, use SLN altimeter setting; increase LPV DA to 1468 feet; increase LNAV/VNAV DA to 1667 feet; increase all MDAs 80 feet and LNAV visibility Cat C ½ SM, and Circling visibility Cat C ¼ SM.

MISSED APPROACH: Climb to 3400 direct FINEB and hold.

AWOS-3P 124.125	MARSHALL AAF GCA* 121.25 269.05	UNICOM 122.8 (CTAF)
---------------------------	---	-------------------------------

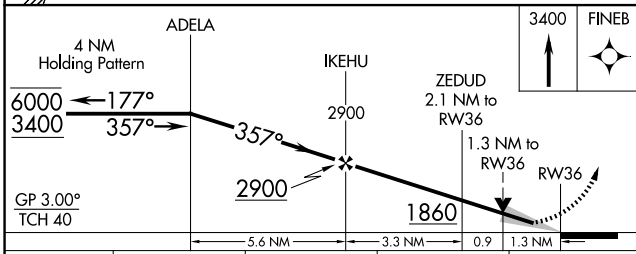


NC-2, 11 JUN 2026 to 09 JUL 2026

NC-2, 11 JUN 2026 to 09 JUL 2026

ELEV 1153	D TDZE 1151
-----------	--------------------

REIL Rwy 18 and 36
MIRL Rwy 18-36



CATEGORY	A	B	C	D
LPV DA	1401-1 250 (300-1)			NA
LNAV/VNAV DA	1600-1 ³ / ₈ 449 (500-1 ³ / ₈)			NA
LNAV MDA	1600-1 449 (500-1)	1600-1 ³ / ₈ 449 (500-1 ³ / ₈)		NA
CIRCLING	1680-1 527 (600-1)	1900-2 ¹ / ₄ 747 (800-2 ¹ / ₄)		NA

