

| | | |
|---|------------------------|--|
| VORTAC SLN 117.1 Chan 118 | APP CRS 087° | Rwy Ldg TDZE Apt Elev N/A N/A 1153 |
|---|------------------------|--|

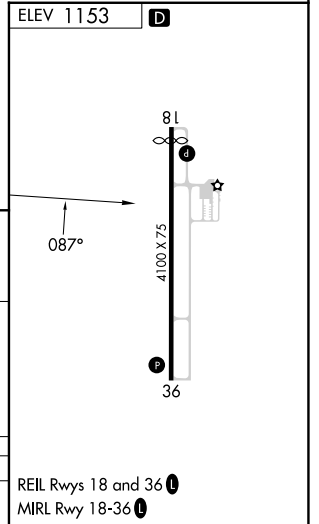
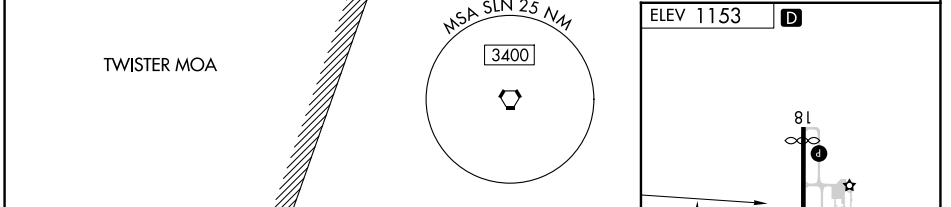
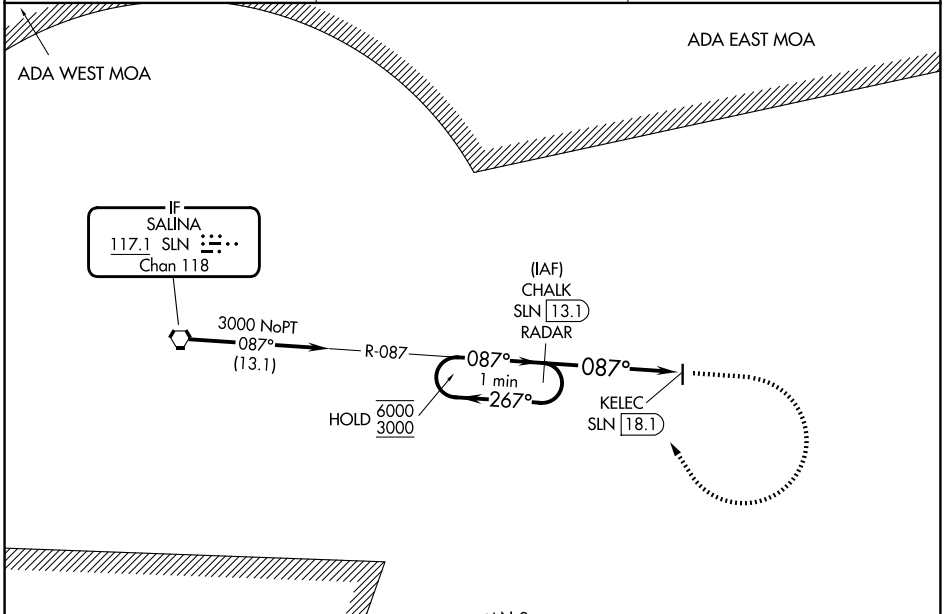
VOR-A
ABILENE MUNI (K78)

DME required. RADAR required for procedure entry at CHALK.

⚠️ **NA** When local altimeter setting not received, use SLN altimeter setting and increase all MDAs 80 feet and visibility Cat C ¼ SM.

MISSED APPROACH: Climb to 2600 then climbing right turn to 3000 on heading 320° and SLN VORTAC R-087 to CHALK/13.1 DME/RADAR and hold.

| | | |
|---------------------------|---|-------------------------------|
| AWOS-3P 124.125 | MARSHALL AAF GCA* 121.25 269.05 | UNICOM 122.8 (CTAF) |
|---------------------------|---|-------------------------------|



| | | | | |
|----------|--------|-------------|-------------------------|----|
| CATEGORY | A | B | C | D |
| CIRCLING | 1740-1 | 587 (600-1) | 1900-2¼ 747 (800-2¼) | NA |

NC-2, 11 JUN 2026 to 09 JUL 2026

NC-2, 11 JUN 2026 to 09 JUL 2026