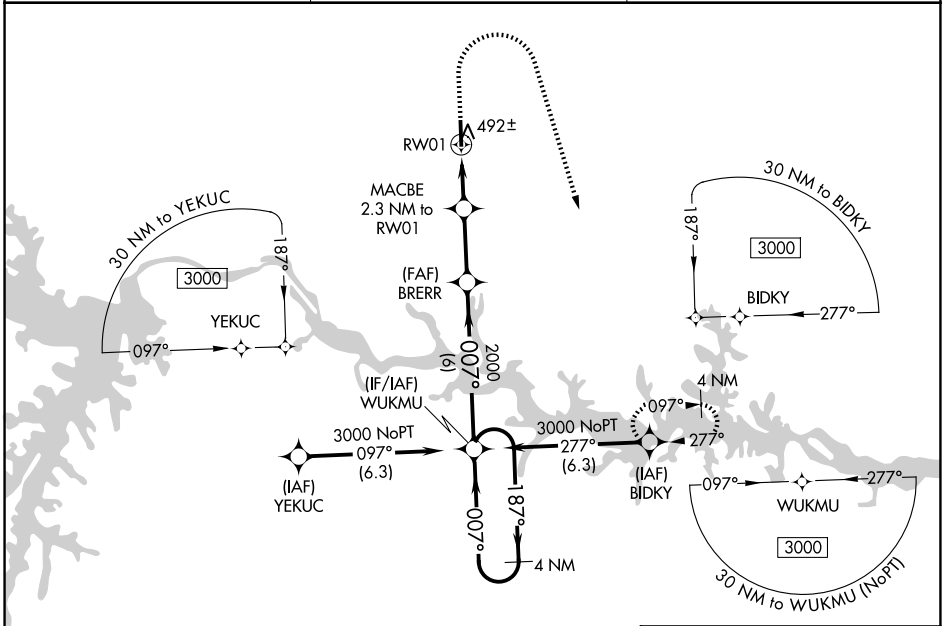


WAAS CH <b>63118</b> <b>W01A</b>	APP CRS <b>007°</b>	Rwy Ldg TDZE <b>417</b> Apt Elev <b>441</b>
--	------------------------	---

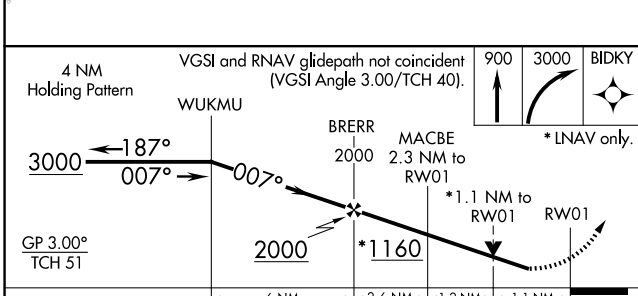
**RNAV (GPS) RWY 1**  
MECKLENBURG-BRUNSWICK RGNL (A/C)

<p>▼ For uncompensated Baro-VNAV systems, LNAV/VNAV NA below -15°C (5°F) or above 54°C (130°F). DME/DME RNP-0.3 NA. Rwy 1 helicopter visibility reduction below ¾ SM NA. For inop ALS, increase LPV all visibility to 1½ SM.</p>	<p>ODALS</p>	<p>MISSED APPROACH: Climb to 900 then climbing right turn to 3000 direct BIDKY and hold.</p>
<p>AWOS-3 <b>127.525</b></p>	<p>WASHINGTON CENTER <b>118.75 377.1</b></p>	<p>UNICOM <b>122.8 (CTAF) 0</b></p>

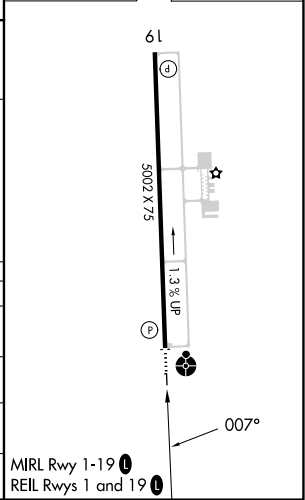


NE-3, 11 JUN 2026 to 09 JUL 2026

NE-3, 11 JUN 2026 to 09 JUL 2026



ELEV 441	TDZE 417
----------	----------



CATEGORY	A	B	C	D
LPV DA		714-1	297 (300-1)	
LNAV/VNAV DA		692-1	275 (300-1)	
LNAV MDA		760-1	343 (400-1)	
CIRCLING	860-1 419 (500-1)	900-1 459 (500-1)	1060-1¾ 619 (700-1¾)	1060-2 619 (700-2)