

MADISONVILLE, TEXAS

AL-6843 (FAA)

25275

APP CRS	Rwy Ldg	3205
188°	TDZE	287
	Apt Elev	287

RNAV (GPS) RWY 19

MADISONVILLE MUNI (51R)

RNP APCH - GPS.

▼ Procedure NA at night. Rwy 19 helicopter visibility reduction below 1 SM NA. Use UTS altimeter setting.

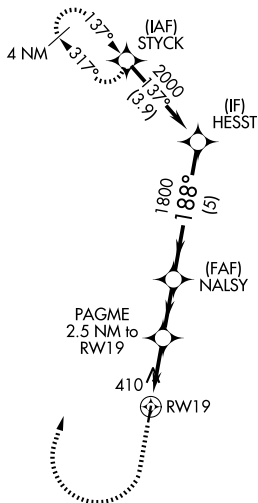
▲ NA

MISSED APPROACH: Climb to 1500 then climbing right turn to 2100 direct STYCK and hold.

UTS ASOS	119.425
----------	----------------

HOUSTON CENTER	134.8 269.6
----------------	--------------------

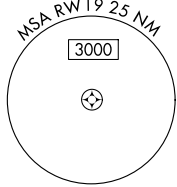
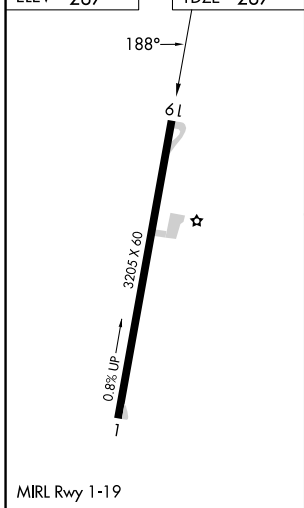
CTAF	122.9
------	--------------



SC-5, 11 JUN 2026 to 09 JUL 2026

SC-5, 11 JUN 2026 to 09 JUL 2026

ELEV 287	TDZE 287
----------	----------



1500	2100	STYCK	HESST
↑	↷	✧	
RW19		PAGME 2.5 NM to RW19	NALSY
1120		1800	2000
2.5 NM		2.1 NM	5 NM
CATEGORY	A	B	C D
LNAV MDA	720-1	433 (500-1)	NA

MADISONVILLE, TEXAS
Amdt 1 26DEC24

30°55'N-95°57'W

MADISONVILLE MUNI (51R)

RNAV (GPS) RWY 19