

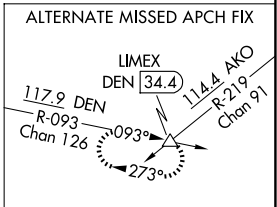
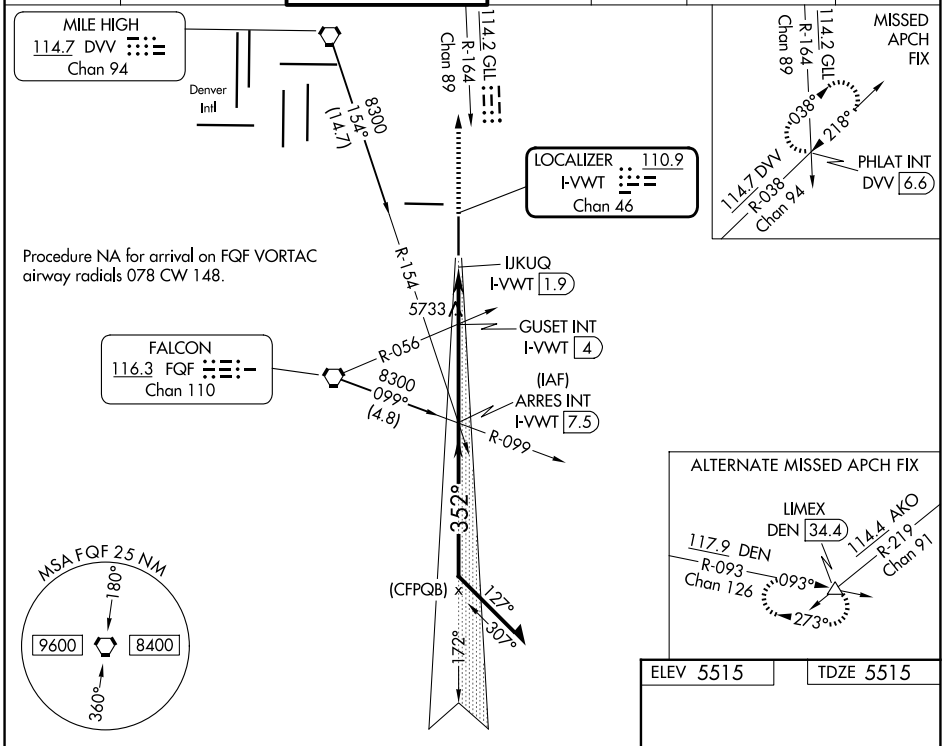
LOC/DME I-VVWT <b>110.9</b> Chan 46	APP CRS <b>352°</b>	Rwy Ldg TDZE Apt Elev <b>8000</b> <b>5515</b> <b>5515</b>
---	------------------------	--

# ILS or LOC RWY 35

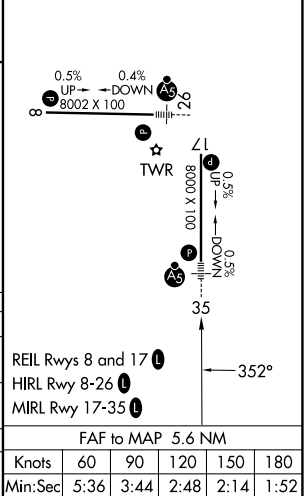
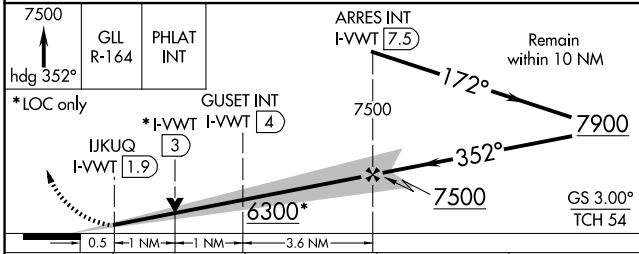
COLORADO AIR AND SPACE PORT (CFO)

<b>⚠</b> For inop ALS, increase S-LOC 35 Cats C and D visibility to 2½ SM.	<b>MALSR</b> 	<b>MISSED APPROACH:</b> Climb to 7500 on heading 352° and on GLL VOR/DME R-164 to PHLAT INT/DVV 6.6 DME and hold.
--	------------------	---

ATIS <b>119.025</b>	DENVER APP CON <b>128.25 371.95</b>	SPACE PORT TOWER * <b>120.2 (CTAF)</b> <b>1</b>	GND CON <b>124.7</b>	CLNC DEL <b>124.7</b>	CLNC DEL <b>121.75</b> (When twr closed)	UNICOM <b>122.95</b>
------------------------	--	--	-------------------------	--------------------------	--	-------------------------



ELEV 5515	TDZE 5515
-----------	-----------



CATEGORY	A	B	C	D
S-ILS 35	5715-½		200 (200-½)	
S-LOC 35	6300-½ 785 (800-½)	6300-¾ 785 (800-¾)	6300-1¾ 785 (800-1¾)	
GUSET FIX MINIMUMS (DUAL VOR RECEIVERS OR DME REQUIRED)				
S-LOC 35	6040-½	525 (600-½)	6040-1	525 (600-1)

FAF to MAP 5.6 NM					
Knots	60	90	120	150	180
Min:Sec	5:36	3:44	2:48	2:14	1:52

SW-1, 11 JUN 2026 to 09 JUL 2026

SW-1, 11 JUN 2026 to 09 JUL 2026