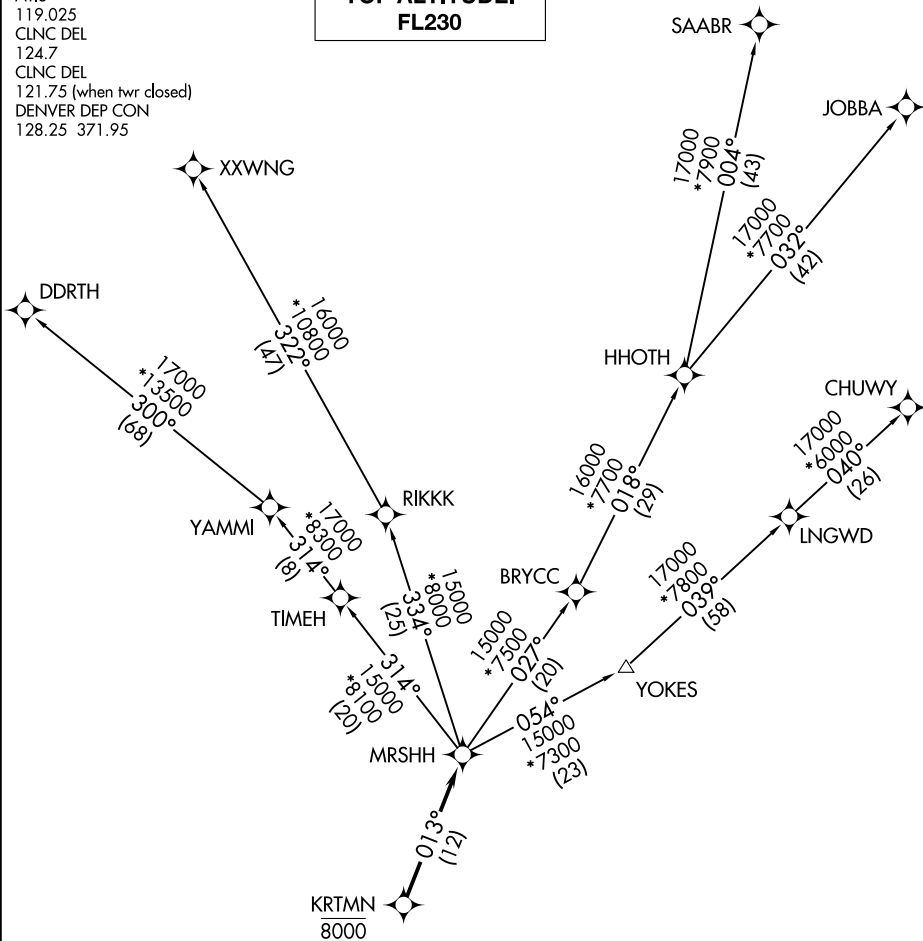


MRS HH TWO DEPARTURE (RNAV)

**TOP ALTITUDE:
FL230**

ATIS
119.025
CLNC DEL
124.7
CLNC DEL
121.75 (when twr closed)
DENVER DEP CON
128.25 371.95



SW-1, 11 JUN 2026 to 09 JUL 2026

SW-1, 11 JUN 2026 to 09 JUL 2026

TAKEOFF MINIMUMS

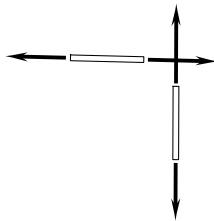
Rwys 8, 17, 26, 35: Standard.

NOTE: DME/DME/IRU or GPS required.

NOTE: RNAV 1.

NOTE: Turbojets only.

NOTE: RADAR required.



NOTE: Chart not to scale.

(NARRATIVE ON FOLLOWING PAGE)

MRS HH TWO DEPARTURE (RNAV)