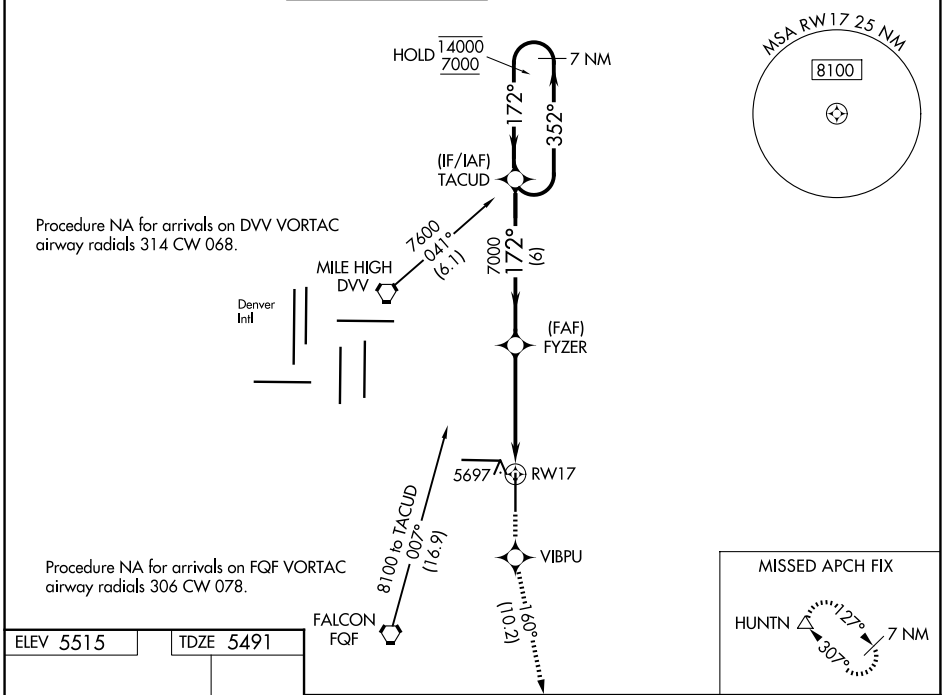


WAAS CH <b>82209</b> <b>W17A</b>	APP CRS <b>172°</b>	Rwy Ldg TDZE Apt Elev	<b>8000</b> <b>5491</b> <b>5515</b>
--	------------------------	-----------------------------	---

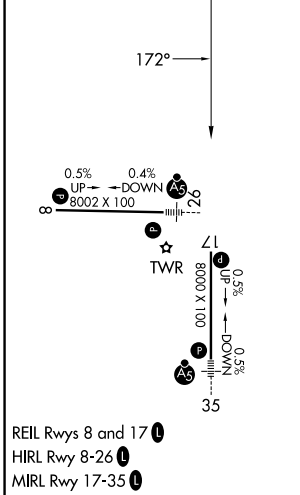
# RNAV (GPS) RWY 17

COLORADO AIR AND SPACE PORT (CFO)

RNP APCH-GPS.				MISSED APPROACH: Climb to 8500 direct VIBPU and on track 160° to HUNTN and hold.			
<p>▼ For uncompensated Baro-VNAV systems, LNAV/VNAV NA below -25°C or above 48°C.</p>							
ATIS <b>119.025</b>	DENVER APP CON <b>128.25 371.95</b>	SPACE PORT TOWER* <b>120.2 (CTAF) 0</b>	GND CON <b>124.7</b>	CLNC DEL <b>124.7</b>	CLNC DEL <b>121.75</b> (When twr closed)	UNICOM <b>122.95</b>	



ELEV 5515	TDZE 5491
-----------	-----------



CATEGORY	A	B	C	D
LPV DA	5691-3/4 200 (200-3/4)			
LNAV/VNAV DA	5916-1 3/8 425 (500-1 3/8)			
LNAV MDA	6000-1	509 (500-1)	6000-1 1/2	509 (500-1 1/2)
CIRCLING	6000-1	485 (500-1)	6100-1 1/2 585 (600-1 1/2)	6300-2 1/2 785 (800-2 1/2)

SW-1, 11 JUN 2026 to 09 JUL 2026

SW-1, 11 JUN 2026 to 09 JUL 2026