

RNAV (GPS) RWY 26

COLORADO AIR AND SPACE PORT (CFO)

WAAS CH 93909 W26A	APP CRS 263°	Rwy Ldg TDZE Apt Elev	8002 5489 5515
--	------------------------	-----------------------------	---

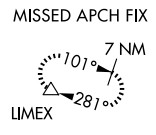
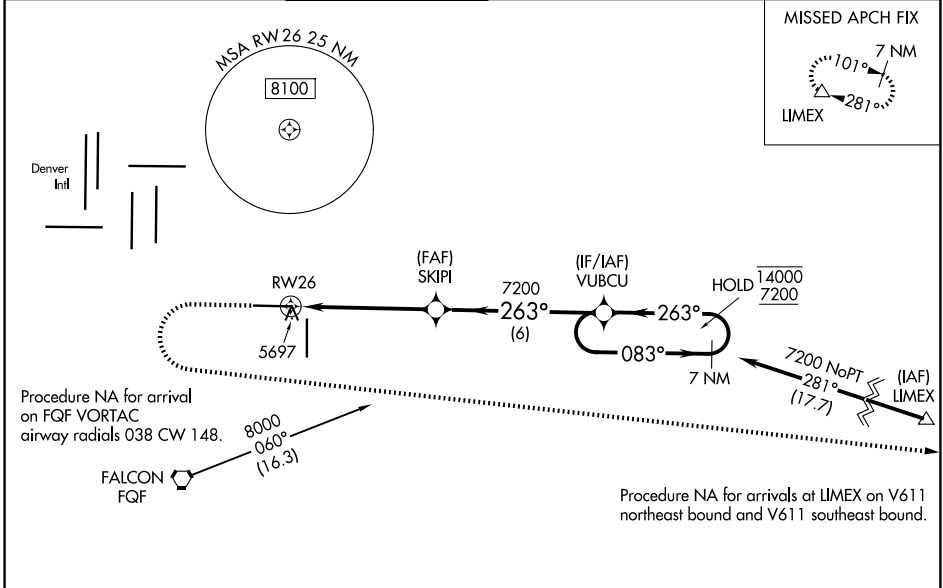
RNP APCH.



MISSED APPROACH: (Do not exceed 200K until LIMEX) Climb to 6100 then climbing left turn to 7600 direct LIMEX and hold.

⚠ For uncompensated Baro-VNAV systems, LNAV/VNAV NA below -25°C or above 48°C. For inop ALS, increase LNAV/VNAV all Cats visibility to 1½ SM, and increase LNAV Cat C/D visibility to 1½ SM.

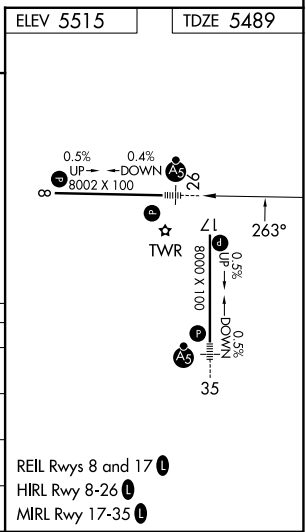
ATIS 119.025	DENVER APP CON 128.25 371.95	SPACE PORT TOWER * 120.2 (CTAF)	GND CON 124.7	CLNC DEL 124.7	CLNC DEL 121.75 (When twr closed)	UNICOM 122.95
------------------------	--	---	-------------------------	--------------------------	--	-------------------------



SW-1, 11 JUN 2026 to 09 JUL 2026

SW-1, 11 JUN 2026 to 09 JUL 2026

ELEV 5515	TDZE 5489			
6100	7600	LIMEX		
*LNAV only				
*1.4 NM to RWY26				
GP 3.00° TCH 50				
CATEGORY	A	B	C	D
LPV DA	5689-½ 200 (200-½)			
LNAV/VNAV DA	5858-¾ 369 (400-¾)			
LNAV MDA	5960-½	471 (500-½)	5960-1	471 (500-1)
CIRCLING	6000-1	485 (500-1)	6100-1½	6300-2½
			585 (600-1½)	785 (800-2½)



REIL Rwy 8 and 17
HIRL Rwy 8-26
MIRL Rwy 17-35