

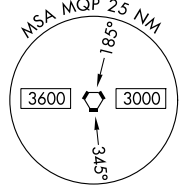
JOE POOL EIGHT DEPARTURE

FORT WORTH, TEXAS

LONE STAR DEP CON
125.8 257.95
CTAF
123.0

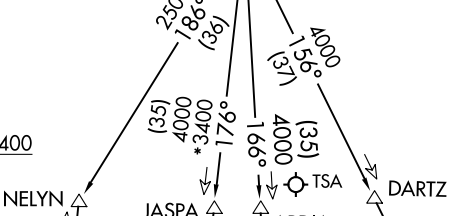
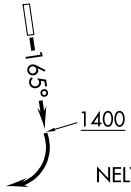
RADAR and DME required.

**TOP ALTITUDE:
ASSIGNED BY ATC**



MILLSAP
117.7 MQP
Chan 124

MAVERICK
113.1 TTT
Chan 78



WACO
115.3 ACT
Chan 100

LEONA
110.8 LOA
Chan 45

COLLEGE STATION
113.3 CLL
Chan 80

CENTEX
112.8 CWK
Chan 75

SAN ANTONIO
116.8 SAT
Chan 115

NAVASOTA
115.9 TNV
Chan 106

TAKEOFF MINIMUMS
Rwy 35: Standard.
Rwy 17: 300-1³/₈ or standard with minimum
climb of 512'/NM to 1300.

(CONTINUED ON FOLLOWING PAGE)

NOTE: Chart not to scale.

SC-2, 11 JUN 2026 to 09 JUL 2026

SC-2, 11 JUN 2026 to 09 JUL 2026

JOE POOL EIGHT DEPARTURE