


WAAS CH 77905 W23A	APP CRS 234°	Rwy Ldg TDZE Apt Elev	7300 7143 7143
--	------------------------	-----------------------------	---

RNAV (GPS) RWY 23

EVANSTON-UINTA COUNTY BURNS FLD (E V W)

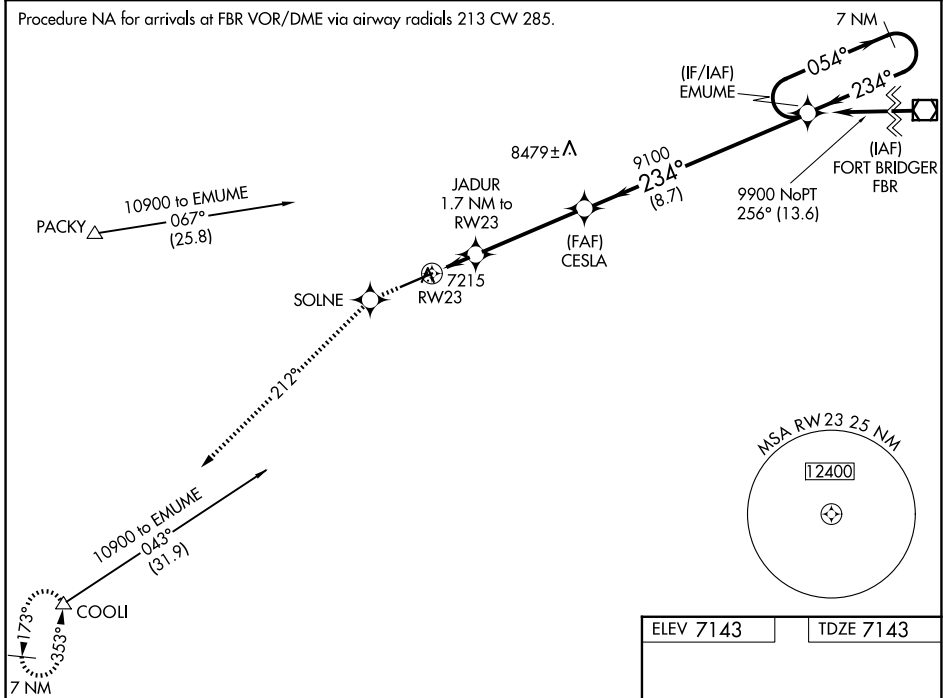
RNP APCH - GPS.

⚠ For inoperative MALS/R, increase LPV all Cats visibility to 1, LNAV/VNAV Cat D to 1 and LNAV Cat D to 1¼. When local altimeter setting not received, procedure NA. For uncompensated Baro-VNAV systems, LNAV/VNAV NA below -29°C or above 34°C.

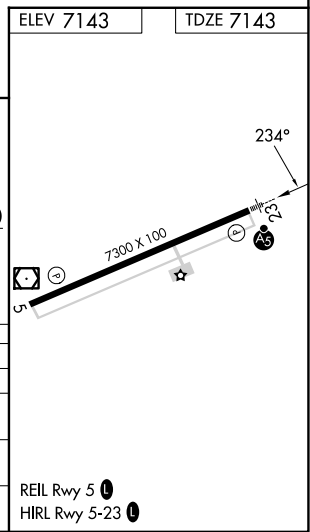
MALS/R 

MISSED APPROACH: Climb to 12000 direct SOLNE and via 212° track to COOLI and hold, continue climb-in-hold to 12000.

ASOS 120.0	SALT LAKE CENTER 127.7 354.125	GCO 121.72	UNICOM 123.0 (CTAF) 
----------------------	--	----------------------	---



12000	SOLNE	212° tr	COOLI	CESLA	EMUME	7 NM Holding Pattern
*LNAV only						
RW23		*1.1 NM to RW23		JADUR 1.7 NM to RW23	7700*	9100
-1.1 NM		0.6 NM		4.2 NM	8.7 NM	GP 3.00° TCH 47
CATEGORY	A		B		C	D
LPV DA	7393-½		250 (300-½)			
LNAV/VNAV DA	7443-½		300 (300-½)		7443-¾	300 (300-¾)
LNAV MDA	7520-½		377 (400-½)		7520-1	377 (400-1)
CIRCLING	7680-1 537 (600-1)	7760-1 617 (700-1)	7800-1¾ 657 (700-1¾)	8000-2¾ 857 (900-2¾)		



NW-1, 11 JUN 2026 to 09 JUL 2026

NW-1, 11 JUN 2026 to 09 JUL 2026