

APP CRS <b>138°</b>	Rwy Ldg TDZE Apt Elev	<b>5000</b> <b>988</b> <b>989</b>
------------------------	-----------------------------	---

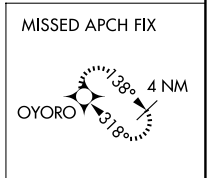
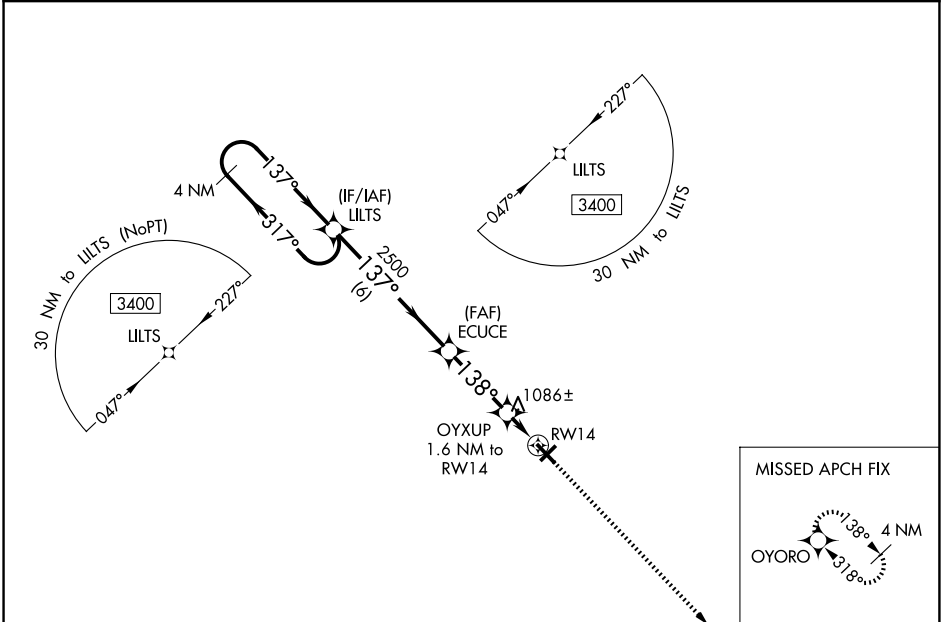
# RNAV (GPS) RWY 14

BURNETT COUNTY (RZN)

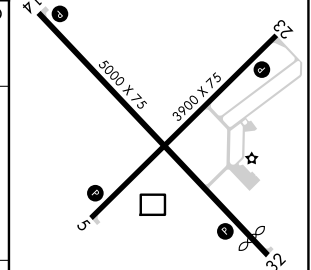
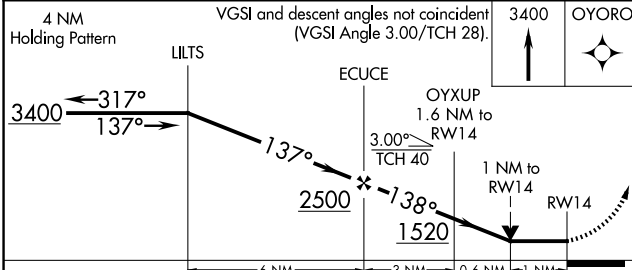
**▼** DME/DME RNP-0.3 NA. VDP NA with Rush City, MN altimeter setting.  
**▲** When local altimeter setting not received, use Rush City, MN altimeter setting and increase all MDA 80 feet; increase LNAV Cat C/D visibility and Circling Cat C/D visibility ¼ mile. Helicopter visibility reduction below ¾ SM NA. Night landing: Rwy 5, 23, 32 NA.

**MISSED APPROACH:**  
Climb to 3400 direct OYORO and hold.

<b>AWOS-3</b> <b>118.325</b>	<b>MINNEAPOLIS CENTER</b> <b>121.05 235.775</b>	<b>UNICOM</b> <b>122.8 (CTAF)</b>
---------------------------------	--	--------------------------------------



<b>ELEV 989</b>	<b>TDZE 988</b>
-----------------	-----------------



CATEGORY	A	B	C	D
LNAV MDA	1340-1		352 (400-1)	
CIRCLING	1440-1	451 (500-1)	1540-1½ 551 (600-1½)	1680-2¼ 691 (700-2¼)

REIL Rwys 5, 14, 23 and 32 **Ⓢ**  
MRL Rwys 5-23 and 14-32 **Ⓢ**

EC-3, 11 JUN 2026 to 09 JUL 2026

EC-3, 11 JUN 2026 to 09 JUL 2026