

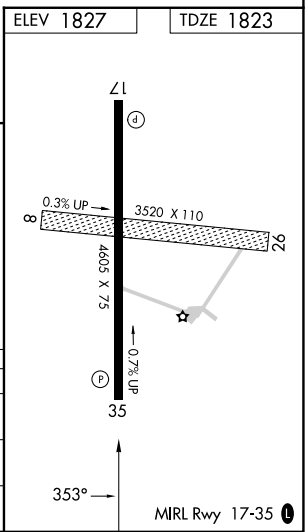
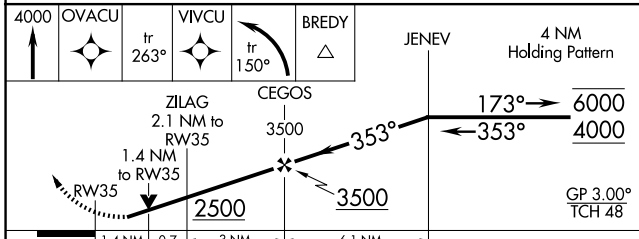
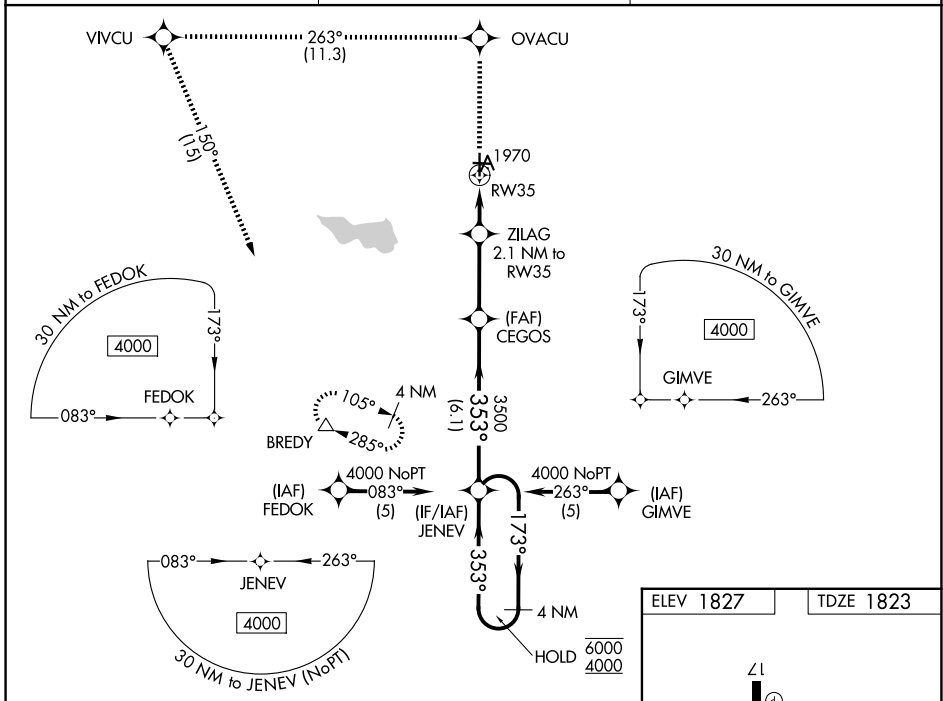
WAAS CH <b>49108</b> <b>W35A</b>	APP CRS <b>353°</b>	Rwy Ldg TDZE Apt Elev	<b>4605</b> <b>1823</b> <b>1827</b>
--	------------------------	-----------------------------	---

# RNAV (GPS) RWY 35

CURTIS FLD (BBD)

RNP APCH - GPS.	MISSED APPROACH: Climb to 4000 direct OVACU and on track 263° to VIVCU and left turn on track 150° to BREDY and hold.
<p><b>▼</b> For uncompensated Baro-VNAV systems, LNAV/VNAV NA below -18°C or above 54°C.</p> <p><b>▲</b> Baro-VNAV and VDP NA when using JCT altimeter setting. Rwy 35 helicopter visibility reduction below 3/4 SM NA. When local altimeter setting not received, use JCT altimeter setting and increase LPV DA to 2190 feet; increase LNAV/VNAV DA to 2287 feet and all visibilities 3/8 SM. Increase all MDAs 120 feet and LNAV visibility Cat C 1/4 SM.</p>	

AWOS-3 <b>118.375</b>	HOUSTON CENTER <b>132.35 317.5</b>	UNICOM <b>122.8 (CTAF) 0</b>
--------------------------	---------------------------------------	---------------------------------



CATEGORY	A	B	C	D
LPV DA	2073-1	250 (300-1)		NA
LNAV/VNAV DA	2170-1	347 (400-1)		NA
LNAV MDA	2280-1	457 (500-1)	2280-1 3/8 457 (500-1 3/8)	NA

SC-3, 11 JUN 2026 to 09 JUL 2026

SC-3, 11 JUN 2026 to 09 JUL 2026