

# BOTCH TWO DEPARTURE (RNAV)

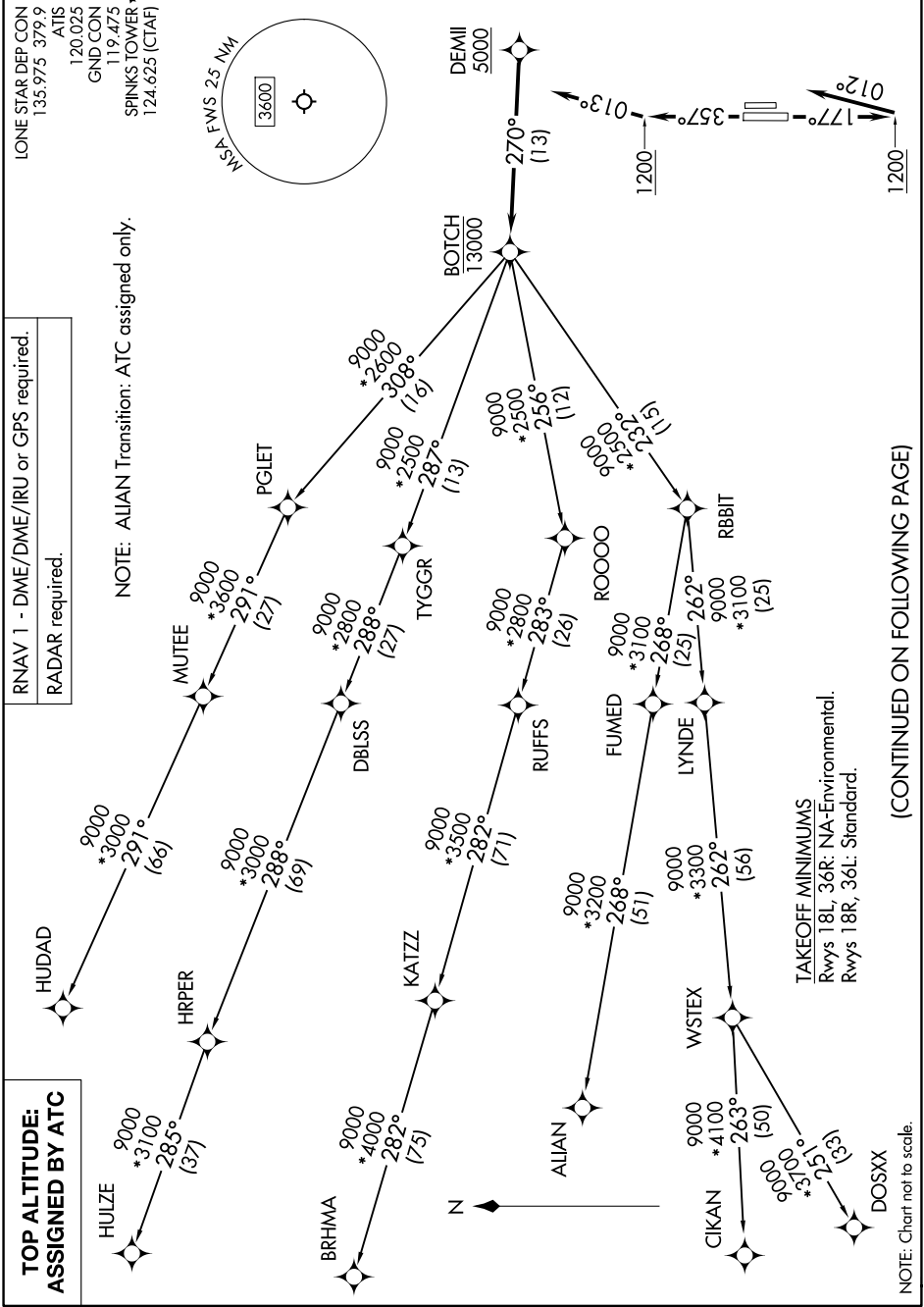
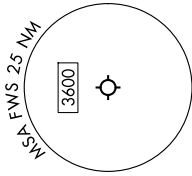
9200 JUN 60 2000 JUN 14 '2-C-C

**TOP ALTITUDE:  
ASSIGNED BY ATC**

RNAV 1 - DME/DME/IRU or GPS required.  
RADAR required.

LONE STAR DEP CON  
135.975 379.9  
ATIS  
120.025  
GND CON  
119.475  
SPINKS TOWER\*  
124.625 (CTAF)

NOTE: ALIAN Transition: ATC assigned only.



TAKEOFF MINIMUMS  
Rwys 18L, 36R: NA-Environmental.  
Rwys 18R, 36L: Standard.

(CONTINUED ON FOLLOWING PAGE)

NOTE: Chart not to scale.

# BOTCH TWO DEPARTURE (RNAV)